

PKN2 Antibody



PACO53462

Product Information

Size:

50ug

Reactivity:

Human

Source:

Rabbit

Isotype:

IgG

Applications:

ELISA, IHC, IF

Recommended dilutions:

ELISA:1:2000-1:10000, IHC:1:20-1:200,
IF:1:50-1:200

Protein Background:

Gene ID:

PKN2

Uniprot

Q16513

Synonyms:

Serine/threonine-protein kinase N2 (EC 2.7.11.13) (PKN gamma) (Protein kinase C-like 2) (Protein-kinase C-related kinase 2), PKN2, PRK2, PRKCL2

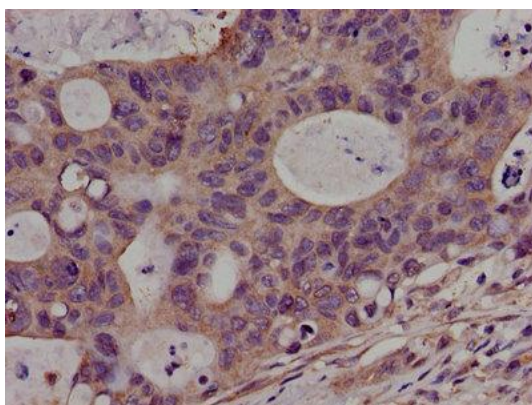
Immunogen:

Recombinant Human Serine/threonine-protein kinase N2 protein (925-969AA).

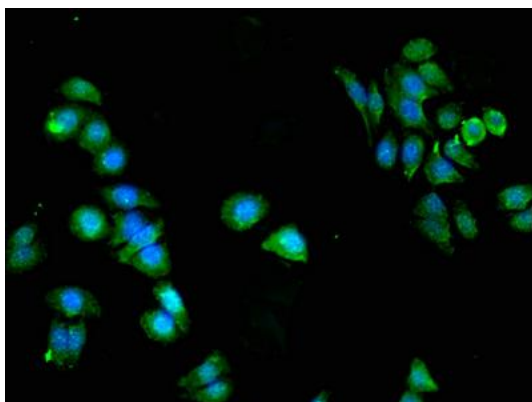
Storage:

Preservative: 0.03% Proclin 300. Constituents: 50% Glycerol, 0.01M PBS, pH 7.4

Product Images



Immunohistochemistry of paraffin-embedded human colon cancer using PACO53462 at dilution of 1:100.



Immunofluorescent analysis of HepG2 cells using PACO53462 at dilution of 1:100 and Alexa Fluor 488-conjugated AffiniPure Goat Anti-Rabbit IgG(H+L).