

TRPC1 Antibody



PACO53758

Product Information

Size:

50ug

Reactivity:

Human

Source:

Rabbit

Isotype:

IgG

Applications:

ELISA, IHC

Recommended dilutions:

ELISA:1:2000-1:10000, IHC:1:20-1:200

Protein Background:

Thought to form a receptor-activated non-selective calcium permeant cation channel. Probably is operated by a phosphatidylinositol second messenger system activated by receptor tyrosine kinases or G-protein coupled receptors. Seems to be also activated by intracellular calcium store depletion.

Gene ID:

TRPC1

Uniprot

P48995

Synonyms:

Short transient receptor potential channel 1 (TrpC1) (Transient receptor protein 1) (TRP-1), TRPC1, TRP1

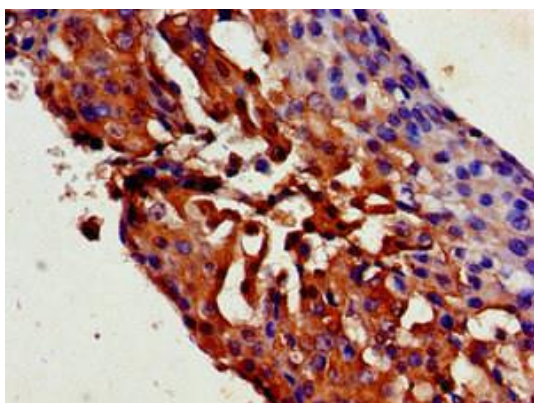
Immunogen:

Recombinant Human Short transient receptor potential channel 1 protein (39-207AA).

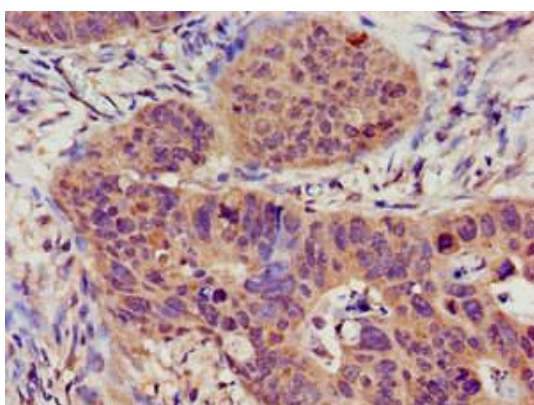
Storage:

Preservative: 0.03% Proclin 300. Constituents: 50% Glycerol, 0.01M PBS, pH 7.4

Product Images



Immunohistochemistry of paraffin-embedded human breast cancer using PACO53758 at dilution of 1:100.



Immunohistochemistry of paraffin-embedded human colon cancer using PACO53758 at dilution of 1:100.