

PACO53818

Product Information

Size:

50ug

Reactivity:

Escherichia coli

Source:

Rabbit

Isotype:

IgG

Applications:

ELISA, WB

Recommended dilutions:

ELISA:1:2000-1:10000, WB:1:500-1:5000

Protein Background:

Catalyzes the NADPH-dependent reduction of glyoxylate and hydroxypyruvate into glycolate and glycerate, respectively.

Gene ID:

ghrA

Uniprot

B7LFE3

Synonyms:

Glyoxylate/hydroxypyruvate reductase A (EC 1.1.1.79) (EC 1.1.1.81) (2-ketoacid, reductase), ghrA

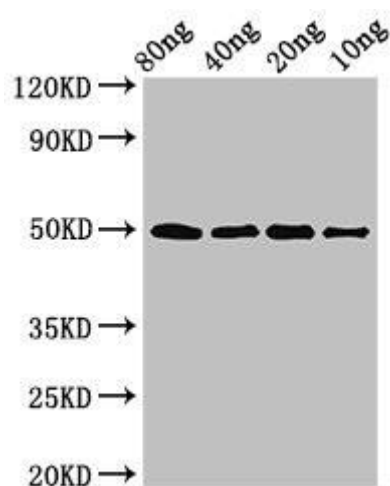
Immunogen:

Recombinant Escherichia coli Glyoxylate/hydroxypyruvate reductase A protein (1-312AA).

Storage:

Preservative: 0.03% Proclin 300. Constituents: 50% Glycerol, 0.01M PBS, pH 7.4

Product Images



Western Blot. Positive WB detected in Recombinant protein. All lanes: ghrA antibody at 3 μ g/ml. Secondary. Goat polyclonal to rabbit IgG at 1/50000 dilution. Predicted band size: 50 kDa. Observed band size: 50 kDa.