

## Product Information

**Size:**

50ug

**Reactivity:**

Human

**Source:**

Rabbit

**Isotype:**

IgG

**Applications:**

ELISA, IHC

**Recommended dilutions:**

ELISA:1:2000-1:10000, IHC:1:20-1:200

**Protein Background:**

Modulator of adipocyte lipid metabolism. Coats lipid storage droplets to protect them from breakdown by hormone-sensitive lipase (HSL). Its absence may result in leanness. Plays a role in unilocular lipid droplet formation by activating CIDEC. Their interaction promotes lipid droplet enlargement and directional net neutral lipid transfer. May modulate lipolysis and triglyceride levels.

**Gene ID:**

PLIN1

**Uniprot**

O60240

**Synonyms:**

Perilipin-1 (Lipid droplet-associated protein), PLIN1, PERI PLIN

**Immunogen:**

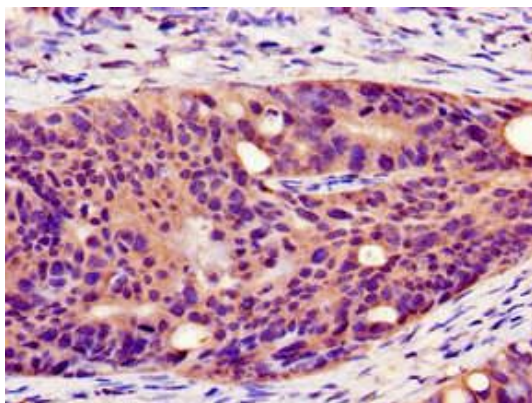
Recombinant Human Perilipin-1 protein (411-496AA).

**Storage:**

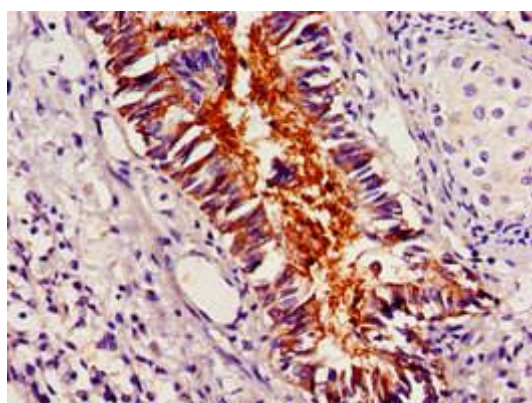
Preservative: 0.03% Proclin 300. Constituents: 50% Glycerol, 0.01M PBS, pH 7.4

## Product Images

---



Immunohistochemistry of paraffin-embedded human colon cancer using PACO53834 at dilution of 1:100.



Immunohistochemistry of paraffin-embedded human lung tissue using PACO53834 at dilution of 1:100.