

Snaclec rhodocytin subunit alpha Antibody



PACO53938

Product Information

Size:

50ug

Reactivity:

Calloselasma rhodostoma

Source:

Rabbit

Isotype:

IgG

Applications:

ELISA, WB

Recommended dilutions:

ELISA:1:2000-1:10000, WB:1:500-1:5000

Protein Background:

Elicits platelet aggregation by the binding to the C-type lectin domain family 1 member B (CLEC1B/CLEC2). Binding leads to tyrosine phosphorylation in the cytoplasmic tail of CLEC1B, which promotes the binding of spleen tyrosine kinase (Syk), subsequent activation of PLC-gamma-2, and platelet activation and aggregation. Binding to GPIbalpha (GP1BA) and alpha-2/beta-1 (ITGA2/ITGB1) may also induce aggregation, but this is controversial.

Gene ID:**Uniprot**

Q9I841

Synonyms:

Snaclec rhodocytin subunit alpha (Aggretin alpha chain) (Rhodoaggretin subunit alpha)

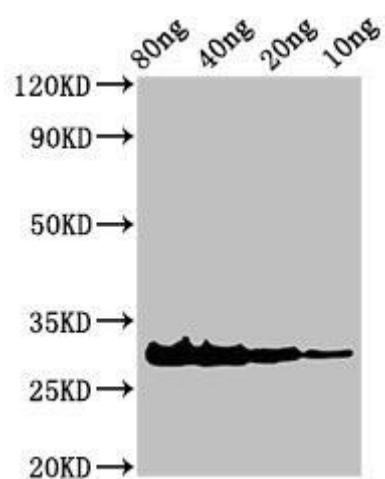
Immunogen:

Recombinant Calloselasma rhodostoma Snaclec rhodocytin subunit α protein (1-136AA).

Storage:

Preservative: 0.03% Proclin 300. Constituents: 50% Glycerol, 0.01M PBS, pH 7.4

Product Images



Western Blot. Positive WB detected in Recombinant protein. All lanes: Rhodocytin subunit alpha antibody at 3 μ g/ml. Secondary. Goat polyclonal to rabbit IgG at 1/50000 dilution. Predicted band size: 31 kDa. Observed band size: 31 kDa.