

# NUMA1 Antibody



PACO54030

---

## Product Information

**Size:**

50ug

**Reactivity:**

Human

**Source:**

Rabbit

**Isotype:**

IgG

**Applications:**

ELISA, WB, IHC, IF

**Recommended dilutions:**

ELISA:1:2000-1:10000, WB:1:500-1:5000,  
IHC:1:20-1:200, IF:1:50-1:200

**Protein Background:**

Highly abundant component of the nuclear matrix where it may serve a non-mitotic structural role, occupies the majority of the nuclear volume. Required for maintenance and establishment of the mitotic spindle poles during symmetric cell divisions, functioning as a tether linking bulk microtubules of the spindle to centrosomes. Also required for proper alignment of the mitotic spindle during asymmetric cell divisions.

**Gene ID:**

NUMA1

**Uniprot**

Q14980

**Synonyms:**

Nuclear mitotic apparatus protein 1 (Nuclear matrix protein-22) (NMP-22) (Nuclear mitotic apparatus protein) (NuMA protein) (SP-H antigen), NUMA1, NMP22 NUMA

**Immunogen:**

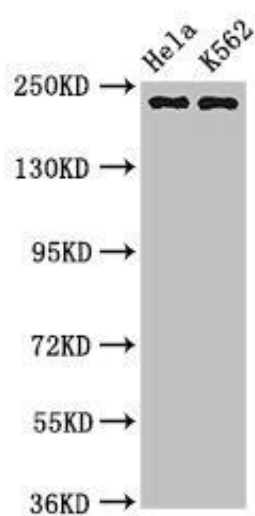
Recombinant Human Nuclear mitotic apparatus protein 1 protein (627-870AA).

**Storage:**

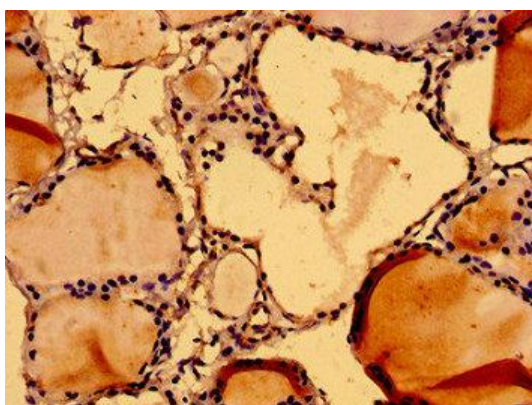
Preservative: 0.03% Proclin 300. Constituents: 50% Glycerol, 0.01M PBS, pH 7.4

## Product Images

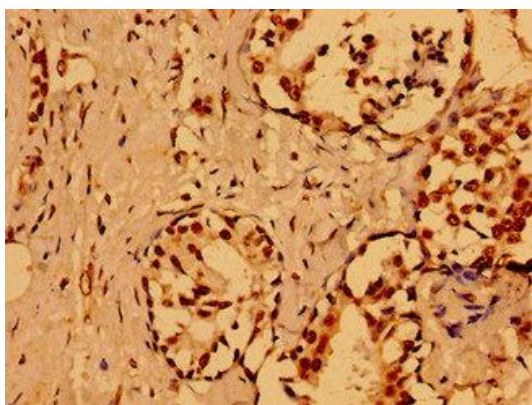
---



Western Blot. Positive WB detected in: HeLa whole cell lysate, K562 whole cell lysate. All lanes: NUMA1 antibody at 3.2 $\mu$ g/ml. Secondary: Goat polyclonal to rabbit IgG at 1/50000 dilution. Predicted band size: 239, 237, 202, 201, 110 kDa. Observed band size: 239 kDa.



Immunohistochemistry of paraffin-embedded human thyroid tissue using PACO54030 at dilution of 1:100.



Immunohistochemistry of paraffin-embedded human breast cancer using PACO54030 at dilution of 1:100.