

# P2RY1 Antibody



PACO54034

---

## Product Information

**Size:**

50ug

**Reactivity:**

Human

**Source:**

Rabbit

**Isotype:**

IgG

**Applications:**

ELISA, IHC

**Recommended dilutions:**

ELISA:1:2000-1:10000, IHC:1:20-1:200

**Protein Background:**

Receptor for extracellular adenine nucleotides such as ATP and ADP. In platelets binding to ADP leads to mobilization of intracellular calcium ions via activation of phospholipase C, a change in platelet shape, and probably to platelet aggregation.

**Gene ID:**

P2RY1

**Uniprot**

P47900

**Synonyms:**

P2Y purinoceptor 1 (P2Y1) (ATP receptor) (Purinergic receptor), P2RY1

**Immunogen:**

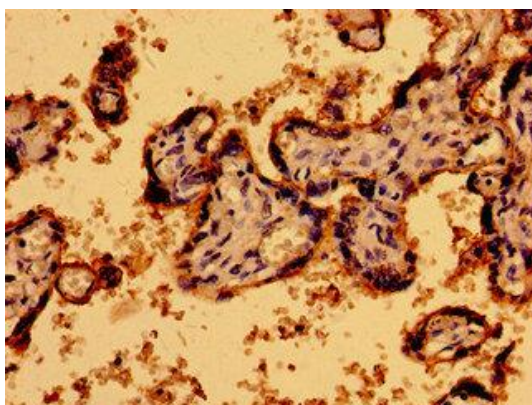
Recombinant Human P2Y purinoceptor 1 protein (329-373AA).

**Storage:**

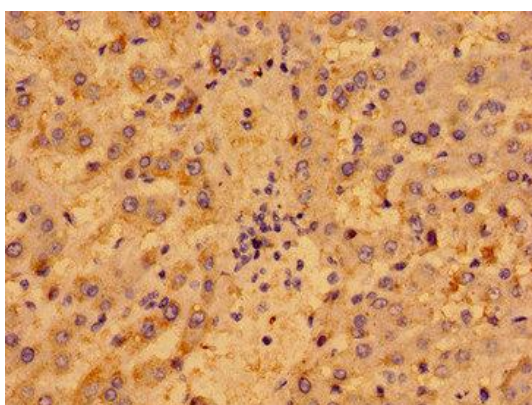
Preservative: 0.03% Proclin 300. Constituents: 50% Glycerol, 0.01M PBS, pH 7.4

## Product Images

---



Immunohistochemistry of paraffin-embedded human placenta tissue using PACO54034 at dilution of 1:100.



Immunohistochemistry of paraffin-embedded human liver cancer using PACO54034 at dilution of 1:100.