

SERPINA5 Antibody



PACO54046

Product Information

Size:

50ug

Reactivity:

Human, Mouse, Rat

Source:

Rabbit

Isotype:

IgG

Applications:

ELISA, WB, IHC, IF

Recommended dilutions:

ELISA:1:2000-1:10000, WB:1:500-1:5000,
IHC:1:20-1:200, IF:1:50-1:200

Protein Background:

Gene ID:

SERPINA5

Uniprot

P05154

Synonyms:

Plasma serine protease inhibitor (Acrosomal serine protease inhibitor) (Plasminogen activator inhibitor 3) (PAI-3) (PAI3) (Protein C inhibitor) (PCI) (Serpina5), SERPINA5, PCI, PLANH3, PROC1

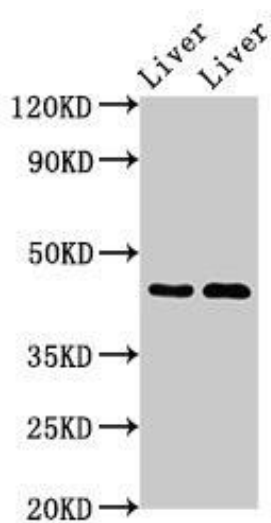
Immunogen:

Recombinant Human Plasma serine protease inhibitor protein (157-367AA).

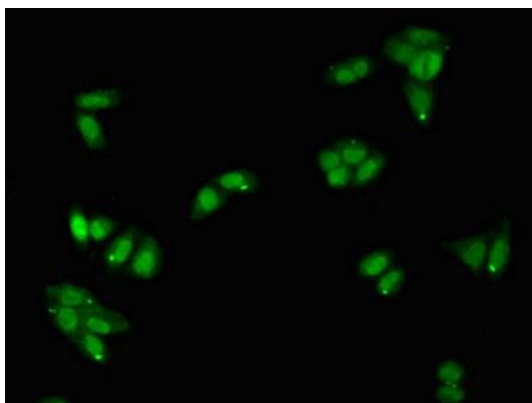
Storage:

Preservative: 0.03% Proclin 300. Constituents: 50% Glycerol, 0.01M PBS, pH 7.4

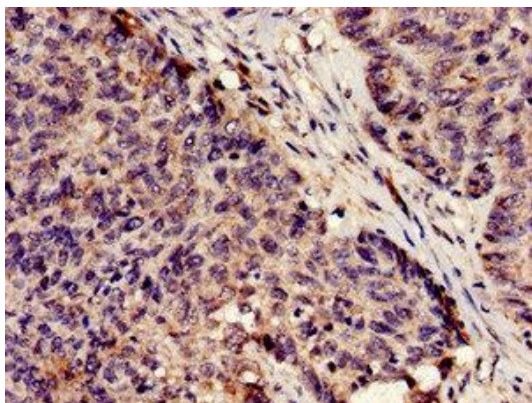
Product Images



Western Blot. Positive WB detected in: Rat liver tissue, Mouse liver tissue. All lanes: SERPINA5 antibody at 3 μ g/ml. Secondary. Goat polyclonal to rabbit IgG at 1/50000 dilution. Predicted band size: 46 kDa. Observed band size: 46 kDa.



Immunofluorescent analysis of HepG2 cells using PACO54046 at dilution of 1:100 and Alexa Fluor 488-conjugated AffiniPure Goat Anti-Rabbit IgG(H+L).



Immunohistochemistry analysis of human ovarian cancer using PACO54046 at dilution of 1:100.