

# TM6SF2 Antibody



PACO54062

---

## Product Information

**Size:**

50ug

**Reactivity:**

Human

**Source:**

Rabbit

**Isotype:**

IgG

**Applications:**

ELISA, IHC, IF

**Recommended dilutions:**

ELISA:1:2000-1:10000, IHC:1:20-1:200,  
IF:1:50-1:200

**Protein Background:**

Regulator of liver fat metabolism influencing triglyceride secretion and hepatic lipid droplet content. May function as sterol isomerase.

**Gene ID:**

TM6SF2

**Uniprot**

Q9BZW4

**Synonyms:**

Transmembrane 6 superfamily member 2, TM6SF2

**Immunogen:**

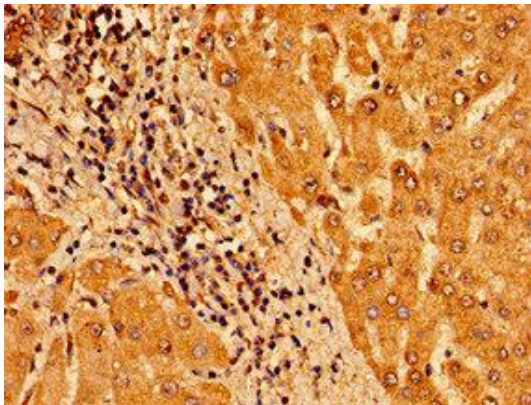
Recombinant Human Transmembrane 6 superfamily member 2 protein (290-331AA).

**Storage:**

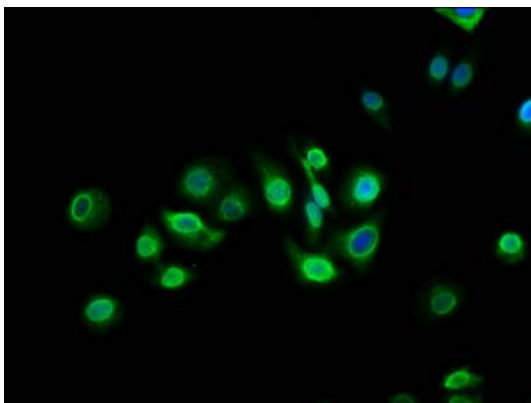
Preservative: 0.03% Proclin 300. Constituents: 50% Glycerol, 0.01M PBS, pH 7.4

## Product Images

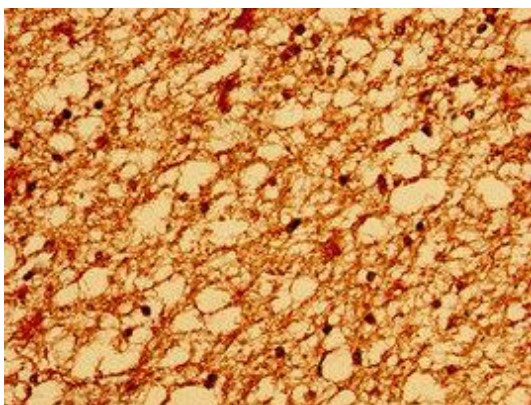
---



Immunohistochemistry of paraffin-embedded human liver tissue using PACO54062 at dilution of 1:100.



Immunofluorescence staining of HepG2 cells with PACO54062 at 1:133, counter-stained with DAPI. The cells were fixed in 4% formaldehyde, permeabilized using 0.2% Triton X-100 and blocked in 10% normal Goat Serum. The cells were then incubated with the antibody overnight at 4°C. The secondary antibody was Alexa Fluor 488-conjugated AffiniPure Goat Anti-Rabbit IgG(H+L).



Immunohistochemistry of paraffin-embedded human brain tissue using PACO54062 at dilution of 1:100.