

PACO54102

Product Information

Size:

50ug

Reactivity:

Human

Source:

Rabbit

Isotype:

IgG

Applications:

ELISA, IHC

Recommended dilutions:

ELISA:1:2000-1:10000, IHC:1:20-1:200

Protein Background:

Plays an essential role in the assembly of succinate dehydrogenase (SDH), an enzyme complex (also referred to as respiratory complex II) that is a component of both the tricarboxylic acid, (TCA) cycle and the mitochondrial electron transport chain, and which couples the oxidation of succinate to fumarate with the reduction of ubiquinone (coenzyme Q) to ubiquinol. Promotes maturation of the iron-sulfur protein subunit SDHB of the SDH catalytic dimer, protecting it from the deleterious effects of oxidants. May act together with SDHAF3.

Gene ID:

SDHAF1

Uniprot

A6NFY7

Synonyms:

Succinate dehydrogenase assembly factor 1, mitochondrial (SDH assembly factor 1) (SDHAF1) (LYR motif-containing protein 8), SDHAF1, LYRM8

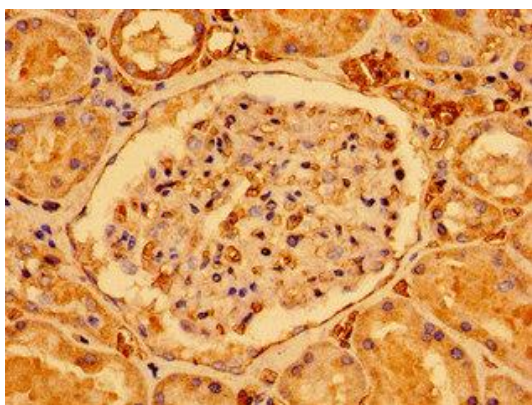
Immunogen:

Recombinant Human Succinate dehydrogenase assembly factor 1, mitochondrial protein (78-115AA).

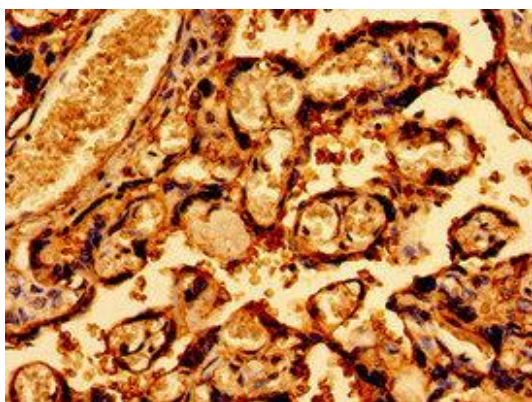
Storage:

Preservative: 0.03% Proclin 300. Constituents: 50% Glycerol, 0.01M PBS, pH 7.4

Product Images



Immunohistochemistry of paraffin-embedded human kidney tissue using PACO54102 at dilution of 1:100.



Immunohistochemistry of paraffin-embedded human placenta tissue using PACO54102 at dilution of 1:100.