

# HLA-B Antibody



PACO54122

---

## Product Information

**Size:**

50ug

**Reactivity:**

Human

**Source:**

Rabbit

**Isotype:**

IgG

**Applications:**

ELISA, WB, IHC

**Recommended dilutions:**

ELISA:1:2000-1:10000, WB:1:500-1:5000,  
IHC:1:20-1:200

**Protein Background:**

Involved in the presentation of foreign antigens to the immune system.

**Gene ID:**

HLA-B

**Uniprot**

Q29718

**Synonyms:**

HLA class I histocompatibility antigen, B-82 alpha chain (MHC class I antigen B\*82),  
HLA-B, HLAB

**Immunogen:**

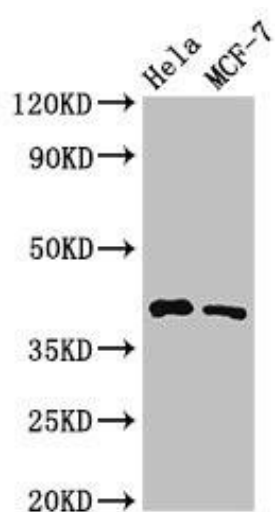
Recombinant Human HLA class I histocompatibility antigen, B-82 &alpha; chain protein  
(197-306AA).

**Storage:**

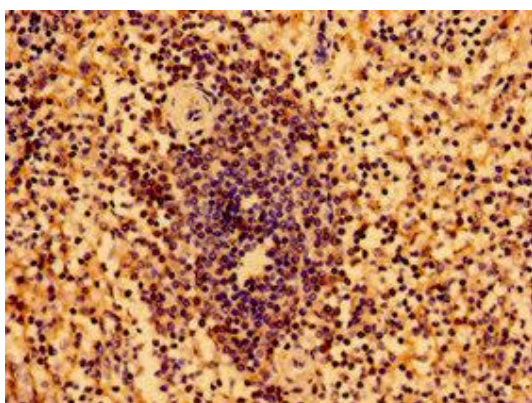
Preservative: 0.03% Proclin 300. Constituents: 50% Glycerol, 0.01M PBS, pH 7.4

## Product Images

---



Western Blot. Positive WB detected in: HeLa whole cell lysate, MCF-7 whole cell lysate. All lanes: HLA-B antibody at 3.2 $\mu$ g/ml. Secondary. Goat polyclonal to rabbit IgG at 1/50000 dilution. Predicted band size: 41 kDa. Observed band size: 41 kDa.



Immunohistochemistry of paraffin-embedded human spleen tissue using PACO54122 at dilution of 1:100.