

MARS2 Antibody



PACO54150

Product Information

Size:

50ug

Reactivity:

Human

Source:

Rabbit

Isotype:

IgG

Applications:

ELISA, WB, IHC

Recommended dilutions:

ELISA:1:2000-1:10000, WB:1:500-1:5000,
IHC:1:20-1:200

Protein Background:

ATP + L-methionine + tRNA(Met) = AMP + diphosphate + L-methionyl-tRNA(Met).

Gene ID:

MARS2

Uniprot

Q96GW9

Synonyms:

Methionine--tRNA ligase, mitochondrial (EC 6.1.1.10) (Methionyl-tRNA synthetase 2) (Mitochondrial methionyl-tRNA synthetase) (MtMetRS), MARS2

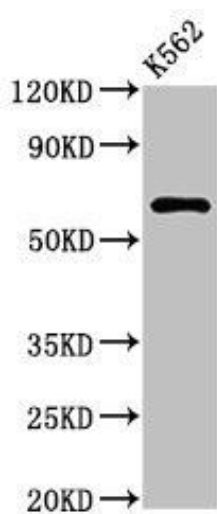
Immunogen:

Recombinant Human Methionine--tRNA ligase, mitochondrial protein (225-460AA).

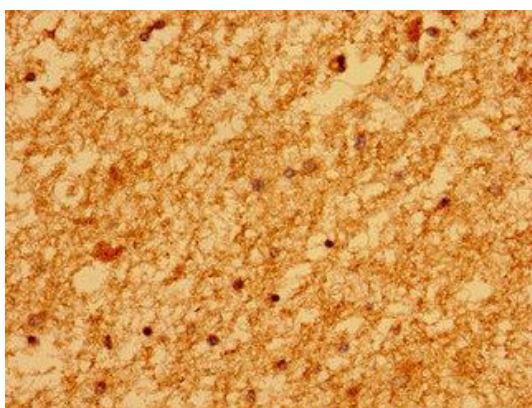
Storage:

Preservative: 0.03% Proclin 300. Constituents: 50% Glycerol, 0.01M PBS, pH 7.4

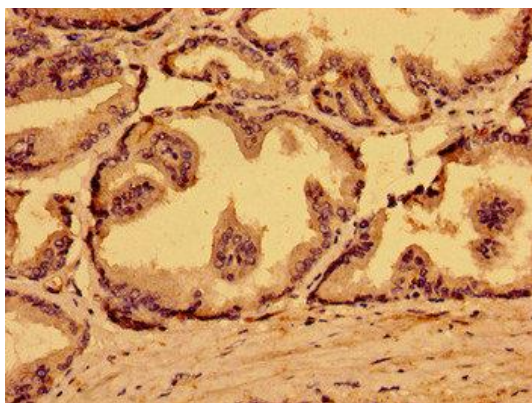
Product Images



Western Blot. Positive WB detected in: K562 whole cell lysate. All lanes: MARS2 antibody at 3 μ g/ml. Secondary. Goat polyclonal to rabbit IgG at 1/50000 dilution. Predicted band size: 67 kDa. Observed band size: 67 kDa.



Immunohistochemistry of paraffin-embedded human brain tissue using PACO54150 at dilution of 1:100.



Immunohistochemistry of paraffin-embedded human prostate tissue using PACO54150 at dilution of 1:100.