

Product Information

Size:

50ug

Reactivity:

Human

Source:

Rabbit

Isotype:

IgG

Applications:

ELISA, IHC, IF

Recommended dilutions:

ELISA:1:2000-1:10000, IHC:1:20-1:200,
IF:1:50-1:200

Protein Background:

Adapter linking MAP3K7/TAK1 and TRAF6 or TRAF2. Mediator of MAP3K7 activation, respectively in the IL1 and TNF signaling pathways. Plays a role in activation of NF-kappa-B and AP1 transcription factor. Isoform 2 may be an oncogenic factor.

Gene ID:

TAB3

Uniprot

Q8N5C8

Synonyms:

TGF-beta-activated kinase 1 and MAP3K7-binding protein 3 (Mitogen-activated protein kinase kinase kinase 7-interacting protein 3) (NF-kappa-B-activating protein 1) (TAK1-binding protein 3) (TAB-3) (TGF-beta-activated kinase 1-binding protein 3), TAB3, MAP3K7IP3

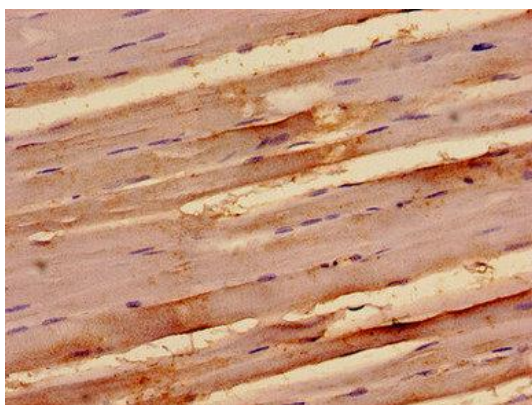
Immunogen:

Recombinant Human TGF-beta-activated kinase 1 and MAP3K7-binding protein 3 protein (361-712AA).

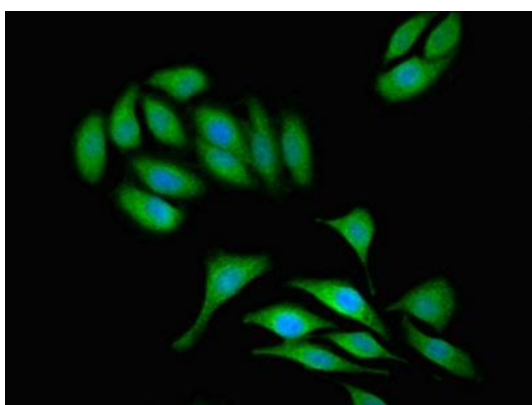
Storage:

Preservative: 0.03% Proclin 300. Constituents: 50% Glycerol, 0.01M PBS, pH 7.4

Product Images



Immunohistochemistry analysis of human skeletal muscle tissue using PACO54174 at dilution of 1:100.



Immunofluorescent analysis of A549 cells using PACO54174 at dilution of 1:100 and Alexa Fluor 488-conjugated AffiniPure Goat Anti-Rabbit IgG(H+L).