

Product Information

Size:

50ug

Reactivity:

Human

Source:

Rabbit

Isotype:

IgG

Applications:

ELISA, IHC

Recommended dilutions:

ELISA:1:2000-1:10000, IHC:1:20-1:200

Protein Background:

Highly glycosylated atypical beta-defensin involved in several aspects of sperm function. Facilitates sperm transport in the female reproductive tract and contributes to sperm protection against immunodetection; both functions are probably implicating the negative surface charge provided by its O-linked oligosaccharides in the sperm glycocalyx. Involved in binding of sperm to oviductal epithelial cells to form a sperm reservoir until ovulation. Release from the sperm surface during capacitation and ovulation by an elevation of oviductal fluid pH is unmasking other surface components and allows sperm to penetrate the cumulus matrix and bind to the zona pellucida of the oocyte. In vitro has antimicrobial activity and may inhibit LPS-mediated inflammation.

Gene ID:

DEFB126

Uniprot

Q9BYW3

Synonyms:

Beta-defensin 126 (Beta-defensin 26) (DEFB-26) (Defensin, beta 126) (Epididymal secretory protein 13.2) (ESP13.2) (HBD26), DEFB126, C20orf8 DEFB26

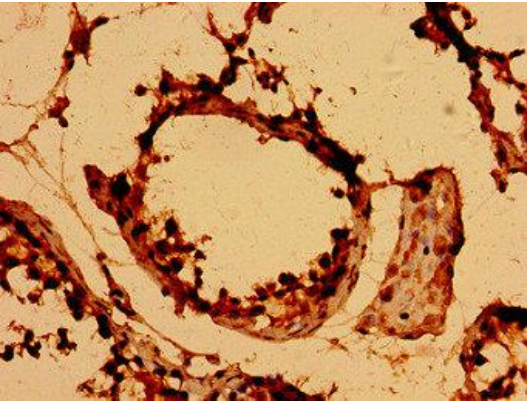
Immunogen:

Recombinant Human Beta-defensin 126 protein (36-111AA).

Storage:

Preservative: 0.03% Proclin 300. Constituents: 50% Glycerol, 0.01M PBS, pH 7.4

Product Images



Immunohistochemistry of paraffin-embedded human testis tissue using PACO54186 at dilution of 1:100.