

PACO54278

Product Information

Size:

50ug

Reactivity:

Human

Source:

Rabbit

Isotype:

IgG

Applications:

ELISA, IHC

Recommended dilutions:

ELISA:1:2000-1:10000, IHC:1:20-1:200

Protein Background:

Cytochromes P450 are a group of heme-thiolate monooxygenases. In liver microsomes, this enzyme is involved in an NADPH-dependent electron transport pathway. It oxidizes a variety of structurally unrelated compounds, including steroids, fatty acid, and xenobiotics. Most active in catalyzing 2-hydroxylation. Caffeine is metabolized primarily by cytochrome CYP1A2 in the liver through an initial N3-demethylation. Also acts in the metabolism of aflatoxin B1 and acetaminophen. Participates in the bioactivation of carcinogenic aromatic and heterocyclic amines. Catalyzes the N-hydroxylation of heterocyclic amines and the O-deethylation of phenacetin.

Gene ID:

CYP1A2

Uniprot

P05177

Synonyms:

Cytochrome P450 1A2 (EC 1.14.14.1) (CYP1A2) (Cholesterol 25-hydroxylase) (Cytochrome P(3)450) (Cytochrome P450 4) (Cytochrome P450-P3), CYP1A2

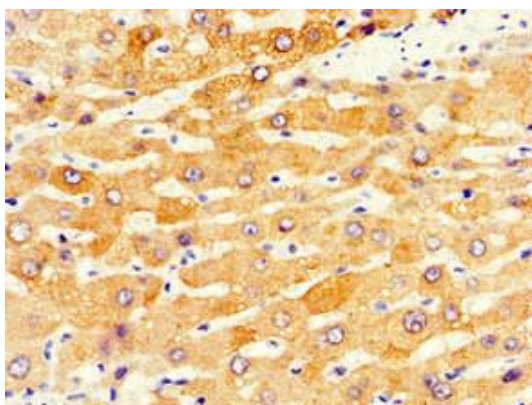
Immunogen:

Recombinant Human Cytochrome P450 1A2 protein (268-445AA).

Storage:

Preservative: 0.03% Proclin 300. Constituents: 50% Glycerol, 0.01M PBS, pH 7.4

Product Images



Immunohistochemistry of paraffin-embedded human liver tissue using PACO54278 at dilution of 1:100.