

PACO54310

Product Information

Size:

50ug

Reactivity:

Human, Rat

Source:

Rabbit

Isotype:

IgG

Applications:

ELISA, WB, IHC, IF

Recommended dilutions:

ELISA:1:2000-1:10000, WB:1:500-1:5000,
IHC:1:20-1:200, IF:1:50-1:200

Protein Background:

May play a role in organizing the actin cytoskeleton.

Gene ID:

IPP

Uniprot

Q9Y573

Synonyms:

Actin-binding protein IPP (Intracisternal A particle-promoted polypeptide) (IPP) (Kelch-like protein 27), IPP, KLHL27

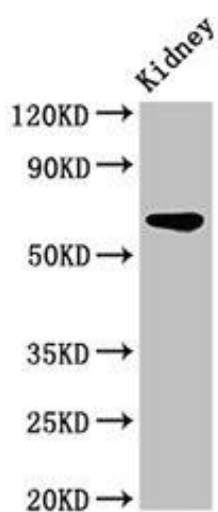
Immunogen:

Recombinant Human Actin-binding protein IPP protein (444-515AA).

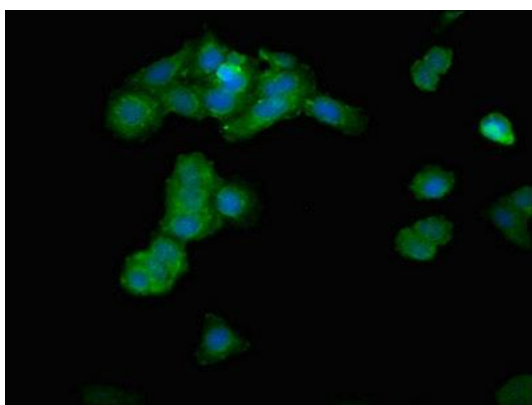
Storage:

Preservative: 0.03% Proclin 300. Constituents: 50% Glycerol, 0.01M PBS, pH 7.4

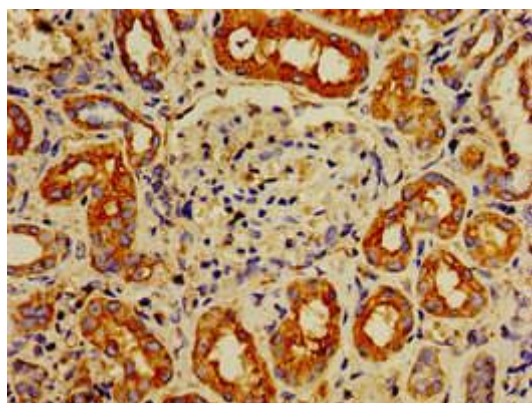
Product Images



Western Blot. Positive WB detected in: Rat kidney tissue. All lanes: IPP antibody at 3.2 μ g/ml. Secondary. Goat polyclonal to rabbit IgG at 1/50000 dilution. Predicted band size: 66 kDa. Observed band size: 66 kDa.



Immunofluorescent analysis of HepG2 cells using PACO54310 at dilution of 1:100 and Alexa Fluor 488-conjugated AffiniPure Goat Anti-Rabbit IgG(H+L).



Immunohistochemistry of paraffin-embedded human kidney tissue using PACO54310 at dilution of 1:100.