

# MAP2K7 Antibody



PACO54326

---

## Product Information

**Size:**

50ug

**Reactivity:**

Human, Mouse

**Source:**

Rabbit

**Isotype:**

IgG

**Applications:**

ELISA, WB, IF

**Recommended dilutions:**

ELISA:1:2000-1:10000, WB:1:1000-1:5000,  
IF:1:50-1:200

**Protein Background:****Gene ID:**

MAP2K7

**Uniprot**

O14733

**Synonyms:**

Dual specificity mitogen-activated protein kinase kinase 7 (MAP kinase kinase 7) (MAPKK 7) (EC 2.7.12.2) (JNK-activating kinase 2) (MAPK/ERK kinase 7) (MEK 7) (Stress-activated protein kinase kinase 4) (SAPK kinase 4) (SAPKK-4) (SAPKK4) (c-Jun N-terminal kinase kinase 2) (JNK kinase 2) (JNKK 2), MAP2K7, JNKK2 MEK7 MKK7 PRKMK7 SKK4

**Immunogen:**

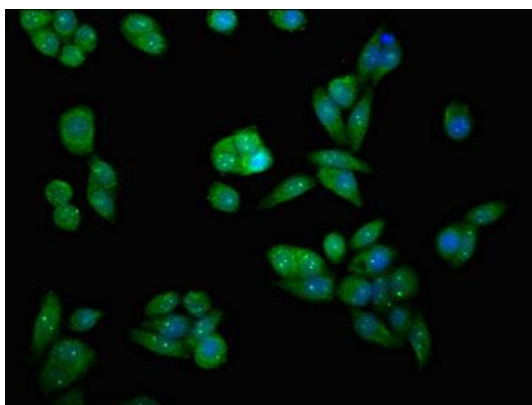
Recombinant Human Dual specificity mitogen-activated protein kinase kinase 7 protein (17-160AA).

**Storage:**

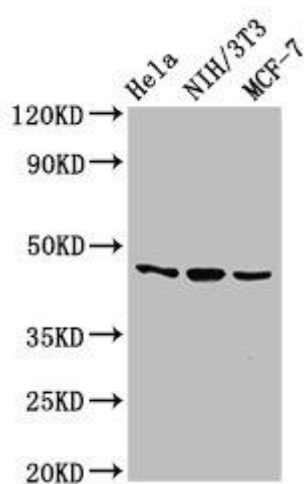
Preservative: 0.03% Proclin 300. Constituents: 50% Glycerol, 0.01M PBS, pH 7.4

## Product Images

---



Immunofluorescent analysis of PC-3 cells using PACO54326 at dilution of 1:100 and Alexa Fluor 488-conjugated AffiniPure Goat Anti-Rabbit IgG(H+L).



Western Blot. Positive WB detected in: HeLa whole cell lysate, NIH/3T3 whole cell lysate, MCF-7 whole cell lysate. All lanes: MAP2K7 antibody at 2.7 $\mu$ g/ml. Secondary. Goat polyclonal to rabbit IgG at 1/50000 dilution. Predicted band size: 48, 52, 50, 49 kDa. Observed band size: 48 kDa.