

# STX1A Antibody



PACO54390

---

## Product Information

**Size:**

50ug

**Reactivity:**

Human

**Source:**

Rabbit

**Isotype:**

IgG

**Applications:**

ELISA, WB

**Recommended dilutions:**

ELISA:1:2000-1:10000, WB:1:500-1:5000

**Protein Background:**

Plays a role in hormone and neurotransmitter exocytosis. Potentially involved in docking of synaptic vesicles at presynaptic active zones. May mediate Ca<sup>2+</sup>-regulation of exocytosis acrosomal reaction in sperm.

**Gene ID:**

STX1A

**Uniprot**

Q16623

**Synonyms:**

Syntaxin-1A (Neuron-specific antigen HPC-1), STX1A, STX1

**Immunogen:**

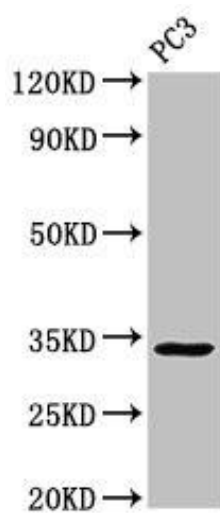
Recombinant Human Syntaxin-1A protein (1-265AA).

**Storage:**

Preservative: 0.03% Proclin 300. Constituents: 50% Glycerol, 0.01M PBS, pH 7.4

## Product Images

---



Western Blot. Positive WB detected in: PC-3 whole cell lysate. All lanes: STX1A antibody at 3 $\mu$ g/ml. Secondary. Goat polyclonal to rabbit IgG at 1/50000 dilution. Predicted band size: 34, 30, 29 kDa. Observed band size: 34 kDa.