

HLA-C Antibody



PACO54462

Product Information

Size:

50ug

Reactivity:

Human

Source:

Rabbit

Isotype:

IgG

Applications:

ELISA, IHC, IF

Recommended dilutions:

ELISA:1:2000-1:10000, IHC:1:20-1:200,
IF:1:50-1:200

Protein Background:

Involved in the presentation of foreign antigens to the immune system.

Gene ID:

HLA-C

Uniprot

P04222

Synonyms:

HLA class I histocompatibility antigen, Cw-3 alpha chain (MHC class I antigen Cw*3),
HLA-C, HLAC

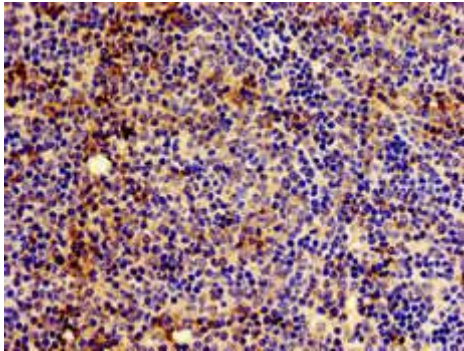
Immunogen:

Recombinant Human HLA class I histocompatibility antigen, Cw-3 α chain protein
(200-306AA).

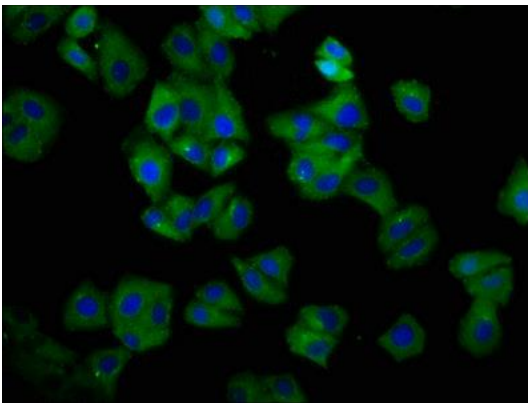
Storage:

Preservative: 0.03% Proclin 300. Constituents: 50% Glycerol, 0.01M PBS, pH 7.4

Product Images



Immunohistochemistry of paraffin-embedded human lymph node tissue using PACO54462 at dilution of 1:100.



Immunofluorescence staining of HepG2 cells with PACO54462 at 1:66, counter-stained with DAPI. The cells were fixed in 4% formaldehyde, permeabilized using 0.2% Triton X-100 and blocked in 10% normal Goat Serum. The cells were then incubated with the antibody overnight at 4°C. The secondary antibody was Alexa Fluor 488-conjugated AffiniPure Goat Anti-Rabbit IgG(H+L).