

PAG 1 Antibody



PACO54498

Product Information

Size:

50ug

Reactivity:

Bovine, Human, Rat

Source:

Rabbit

Isotype:

IgG

Applications:

ELISA, WB

Recommended dilutions:

ELISA:1:2000-1:10000, WB:1:500-1:5000

Protein Background:

Appears to be proteolytically inactive.

Gene ID:**Uniprot**

Q29432

Synonyms:

Pregnancy-associated glycoprotein 1 (PAG 1) (EC 3.4.23) (Pregnancy-specific protein B) (PSP-B)

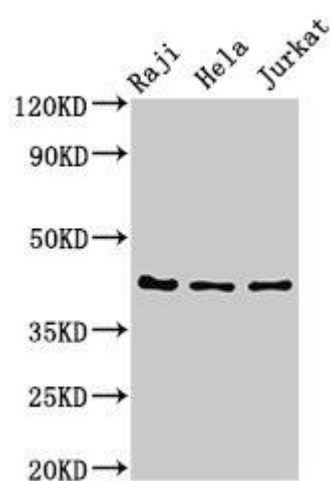
Immunogen:

Recombinant Bovine Pregnancy-associated glycoprotein 1 protein (54-380AA).

Storage:

Preservative: 0.03% Proclin 300. Constituents: 50% Glycerol, 0.01M PBS, pH 7.4

Product Images



Western Blot. Positive WB detected in: Raji whole cell lysate, HeLa whole cell lysate, Jurkat whole cell lysate. All lanes: Pregnancy-associated glycoprotein 1 antibody at 3 μ g/ml. Secondary. Goat polyclonal to rabbit IgG at 1/50000 dilution. Predicted band size: 43 kDa. Observed band size: 43 kDa.