

# ADGRA2 Antibody



PACO54554

---

## Product Information

**Size:**

50ug

**Reactivity:**

Human, Rat

**Source:**

Rabbit

**Isotype:**

IgG

**Applications:**

ELISA, WB, IHC, IF

**Recommended dilutions:**

ELISA:1:2000-1:10000, WB:1:500-1:5000,  
IHC:1:20-1:200, IF:1:50-1:200

**Protein Background:**

Endothelial receptor which functions as a WNT7-specific coactivator of canonical Wnt signaling. Required for normal endothelial cell sprouting and migration in the forebrain and neural tube. Has a major role in establishing the blood-brain barrier. Binds to the glycosaminoglycans heparin, heparin sulfate, chondroitin sulfate and dermatan sulfate.

**Gene ID:**

ADGRA2

**Uniprot**

Q96PE1

**Synonyms:**

Adhesion G protein-coupled receptor A2 (G-protein coupled receptor 124) (Tumor endothelial marker 5), ADGRA2, GPR124 KIAA1531 TEM5

**Immunogen:**

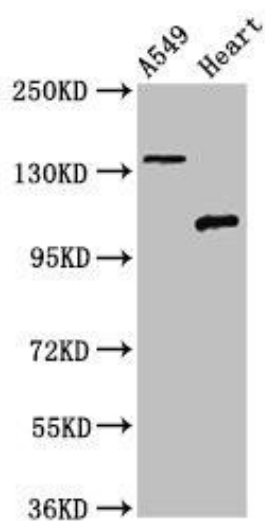
Recombinant Human Adhesion G protein-coupled receptor A2 protein (1069-1338AA).

**Storage:**

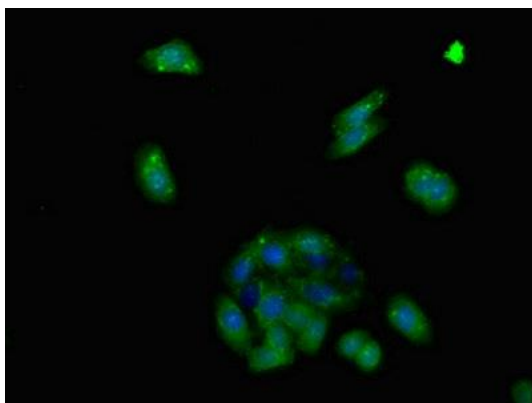
Preservative: 0.03% Proclin 300. Constituents: 50% Glycerol, 0.01M PBS, pH 7.4

## Product Images

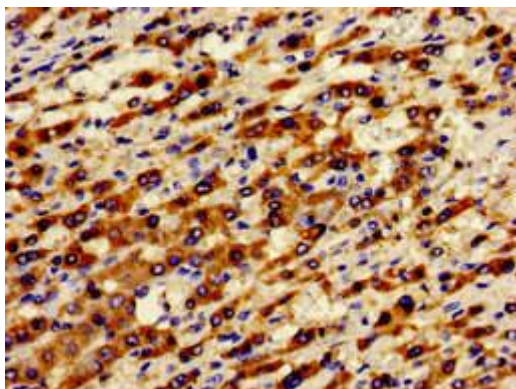
---



Western Blot. Positive WB detected in: A549 whole cell lysate, Rat heart tissue. All lanes: ADGRA2 antibody at 3 $\mu$ g/ml. Secondary. Goat polyclonal to rabbit IgG at 1/50000 dilution. Predicted band size: 143, 120, 20 kDa. Observed band size: 143, 120 kDa.



Immunofluorescent analysis of HepG2 cells using PACO54554 at dilution of 1:100 and Alexa Fluor 488-conjugated AffiniPure Goat Anti-Rabbit IgG(H+L).



Immunohistochemistry of paraffin-embedded human liver cancer using PACO54554 at dilution of 1:100.