

CARD14 Antibody



PACO54578

Product Information

Size:

50ug

Reactivity:

Human

Source:

Rabbit

Isotype:

IgG

Applications:

ELISA, IHC, IF

Recommended dilutions:

ELISA:1:2000-1:10000, IHC:1:20-1:200,
IF:1:50-1:200

Protein Background:

Plays a role in signaling mediated by TRAF2, TRAF3 and TRAF6 and protects cells against apoptosis. Activates NF-kappa-B via BCL10 and IKK. Stimulates the phosphorylation of BCL10.

Gene ID:

CARD14

Uniprot

Q9BXL6

Synonyms:

Caspase recruitment domain-containing protein 14 (CARD-containing MAGUK protein 2) (Carma 2), CARD14, CARMA2

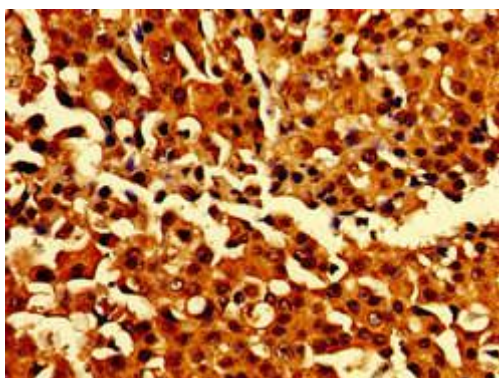
Immunogen:

Recombinant Human Caspase recruitment domain-containing protein 14 protein (249-523AA).

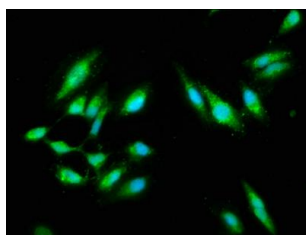
Storage:

Preservative: 0.03% Proclin 300. Constituents: 50% Glycerol, 0.01M PBS, pH 7.4

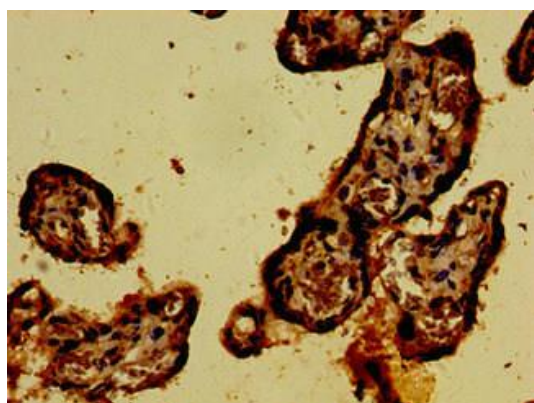
Product Images



Immunohistochemistry of paraffin-embedded human breast cancer using PACO54578 at dilution of 1:100.



Immunofluorescence staining of HeLa cells with PACO54578 at 1:100, counter-stained with DAPI. The cells were fixed in 4% formaldehyde, permeabilized using 0.2% Triton X-100 and blocked in 10% normal Goat Serum. The cells were then incubated with the antibody overnight at 4°C. The secondary antibody was Alexa Fluor 488-conjugated AffiniPure Goat Anti-Rabbit IgG(H+L).



Immunohistochemistry of paraffin-embedded human placenta tissue using PACO54578 at dilution of 1:100.