

# ADCY8 Antibody



PACO54630

---

## Product Information

**Size:**

50ug

**Reactivity:**

Human

**Source:**

Rabbit

**Isotype:**

IgG

**Applications:**

ELISA, IHC, IF

**Recommended dilutions:**

ELISA:1:2000-1:10000, IHC:1:20-1:200,  
IF:1:200-1:500

**Protein Background:**

This is a membrane-bound, calcium-stimulable adenylyl cyclase. May be involved in learning, in memory and in drug dependence.

**Gene ID:**

ADCY8

**Uniprot**

P40145

**Synonyms:**

Adenylate cyclase type 8 (EC 4.6.1.1) (ATP pyrophosphate-lyase 8) (Adenylate cyclase type VIII) (Adenylyl cyclase 8) (AC8) (Ca(2+)/calmodulin-activated adenylyl cyclase), ADCY8

**Immunogen:**

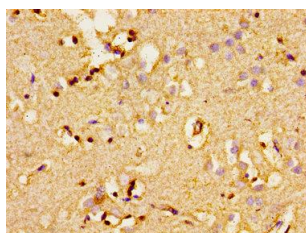
Recombinant Human Adenylate cyclase type 8 protein (534-670AA).

**Storage:**

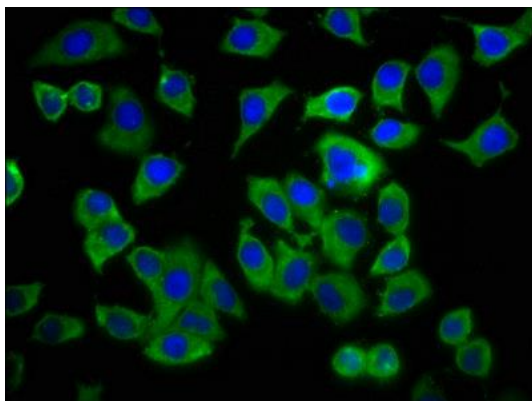
Preservative: 0.03% Proclin 300. Constituents: 50% Glycerol, 0.01M PBS, pH 7.4

## Product Images

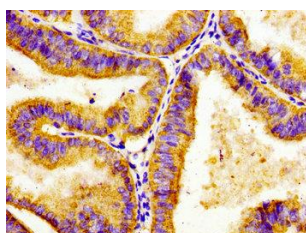
---



Immunohistochemistry of paraffin-embedded human brain tissue using PACO54630 at dilution of 1:100.



Immunofluorescence staining of A549 cells with PACO54630 at 1:233, counter-stained with DAPI. The cells were fixed in 4% formaldehyde, permeabilized using 0.2% Triton X-100 and blocked in 10% normal Goat Serum. The cells were then incubated with the antibody overnight at 4°C. The secondary antibody was Alexa Fluor 488-conjugated AffiniPure Goat Anti-Rabbit IgG(H+L).



Immunohistochemistry of paraffin-embedded human endometrial cancer using PACO54630 at dilution of 1:100.