

PACO54686

Product Information

Size:

50ug

Reactivity:

Human

Source:

Rabbit

Isotype:

IgG

Applications:

ELISA, WB, IHC

Recommended dilutions:

ELISA:1:2000-1:10000, WB:1:500-1:5000,
IHC:1:20-1:200

Protein Background:

Receptor for CCL19 and chemerin/RARRES2. Does not appear to be a signaling receptor, but may have a role in modulating chemokine-triggered immune responses by capturing and internalizing CCL19 or by presenting RARRES2 ligand to CMKLR1, a functional signaling receptors. Plays a critical role for the development of Th2 responses.

Gene ID:

CCRL2

Uniprot

O00421

Synonyms:

C-C chemokine receptor-like 2 (Chemokine receptor CCR11) (Chemokine receptor X) (Putative MCP-1 chemokine receptor), CCRL2, CCR11 CCR6 CKRX CRAM HCR

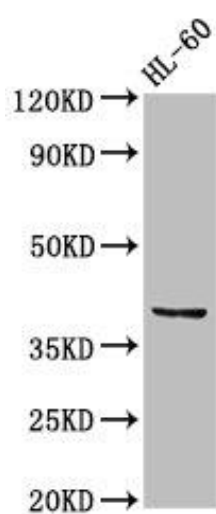
Immunogen:

Recombinant Human C-C chemokine receptor-like 2 protein (1-43AA).

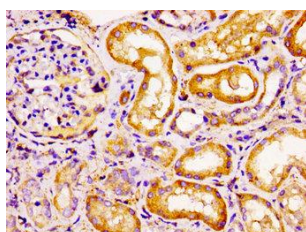
Storage:

Preservative: 0.03% Proclin 300. Constituents: 50% Glycerol, 0.01M PBS, pH 7.4

Product Images



Western Blot. Positive WB detected in: HL60 whole cell lysate. All lanes: CCRL2 antibody at 2.5 μ g/ml. Secondary. Goat polyclonal to rabbit IgG at 1/50000 dilution. Predicted band size: 40, 41 kDa. Observed band size: 40 kDa.



Immunohistochemistry of paraffin-embedded human kidney tissue using PACO54686 at dilution of 1:100.