

PACO54742

---

## Product Information

**Size:**

50ug

**Reactivity:**

Human

**Source:**

Rabbit

**Isotype:**

IgG

**Applications:**

ELISA, WB

**Recommended dilutions:**

ELISA:1:2000-1:10000, WB:1:500-1:5000

**Protein Background:**

Dual specificity phosphatase that dephosphorylates MAP kinase MAPK1/ERK2 on both 'Thr-183' and 'Tyr-185', regulating its activity during the meiotic cell cycle.

**Gene ID:**

DUSP1

**Uniprot**

P28562

**Synonyms:**

Dual specificity protein phosphatase 1 (EC 3.1.3.16) (EC 3.1.3.48) (Dual specificity protein phosphatase hVH1) (Mitogen-activated protein kinase phosphatase 1) (MAP kinase phosphatase 1) (MKP-1) (Protein-tyrosine phosphatase CL100), DUSP1, CL100 MKP1 PTPN10 VH1

**Immunogen:**

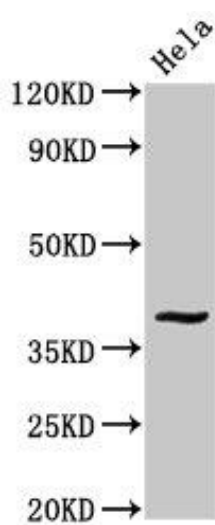
Recombinant Human Dual specificity protein phosphatase 1 protein (125-236AA).

**Storage:**

Preservative: 0.03% Proclin 300. Constituents: 50% Glycerol, 0.01M PBS, pH 7.4

## Product Images

---



Western Blot. Positive WB detected in: HeLa whole cell lysate. All lanes: DUSP1 antibody at 3.4 $\mu$ g/ml. Secondary. Goat polyclonal to rabbit IgG at 1/50000 dilution. Predicted band size: 40 kDa. Observed band size: 40 kDa.