

PACO54754

Product Information

Size:

50ug

Reactivity:

Human, Rat, Mouse

Source:

Rabbit

Isotype:

IgG

Applications:

ELISA, WB, IHC

Recommended dilutions:

ELISA:1:2000-1:10000, WB:1:500-1:5000,
IHC:1:20-1:200

Protein Background:

Transcription factor, which in cooperation with EMX2, acts to generate the boundary between the roof and archipallium in the developing brain. May function in combinations with OTX1/2 to specify cell fates in the developing central nervous system.

Gene ID:

EMX2

Uniprot

Q04743

Synonyms:

Homeobox protein EMX2 (Empty spiracles homolog 2) (Empty spiracles-like protein 2),
EMX2

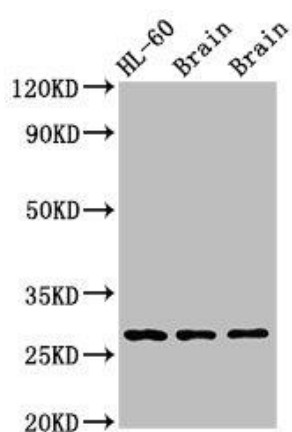
Immunogen:

Recombinant Human Homeobox protein EMX2 protein (75-141AA).

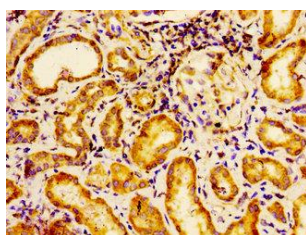
Storage:

Preservative: 0.03% Proclin 300. Constituents: 50% Glycerol, 0.01M PBS, pH 7.4

Product Images



Western Blot. Positive WB detected in: Rat brain tissue, Mouse brain tissue. All lanes: EMX2 antibody at 2.7 μ g/ml. Secondary. Goat polyclonal to rabbit IgG at 1/50000 dilution. Predicted band size: 29, 19 kDa. Observed band size: 29 kDa.



Immunohistochemistry of paraffin-embedded human kidney tissue using PACO54754 at dilution of 1:100.