

## Product Information

**Size:**

50ug

**Reactivity:**

Human

**Source:**

Rabbit

**Isotype:**

IgG

**Applications:**

ELISA, IHC

**Recommended dilutions:**

ELISA:1:2000-1:10000, IHC:1:20-1:200

**Protein Background:**

Plays a role in the fasting response, glucose homeostasis, lipolysis and lipogenesis. Can stimulate cell proliferation (in vitro). May be involved in hair development.

**Gene ID:**

FGF22

**Uniprot**

Q9HCT0

**Synonyms:**

Fibroblast growth factor 22 (FGF-22), FGF22

**Immunogen:**

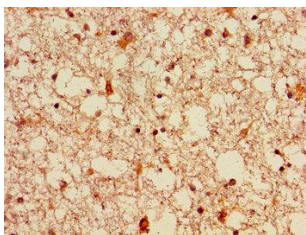
Recombinant Human Fibroblast growth factor 22 protein (23-170AA).

**Storage:**

Preservative: 0.03% Proclin 300. Constituents: 50% Glycerol, 0.01M PBS, pH 7.4

## Product Images

---



Immunohistochemistry of paraffin-embedded human brain tissue using PACO54774 at dilution of 1:100.