

PACO54790

---

## Product Information

**Size:**

50ug

**Reactivity:**

Human

**Source:**

Rabbit

**Isotype:**

IgG

**Applications:**

ELISA, WB, IHC, IF

**Recommended dilutions:**

ELISA:1:2000-1:10000, WB:1:500-1:5000,  
IHC:1:20-1:200, IF:1:50-1:200

**Protein Background:**

Specific growth arrest protein involved in growth suppression. Blocks entry to S phase. Prevents cycling of normal and transformed cells.

**Gene ID:**

GAS1

**Uniprot**

P54826

**Synonyms:**

Growth arrest-specific protein 1 (GAS-1), GAS1

**Immunogen:**

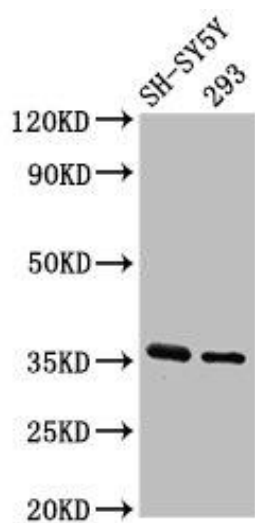
Recombinant Human Growth arrest-specific protein 1 protein (248-318AA).

**Storage:**

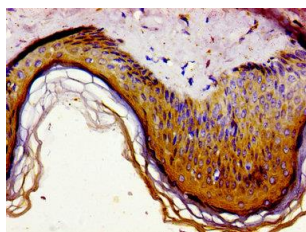
Preservative: 0.03% Proclin 300. Constituents: 50% Glycerol, 0.01M PBS, pH 7.4

## Product Images

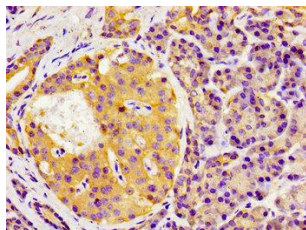
---



Western Blot. Positive WB detected in: SH-SY5Y whole cell lysate, 293 whole cell lysate. All lanes: GAS1 antibody at 3.2 $\mu$ g/ml. Secondary. Goat polyclonal to rabbit IgG at 1/50000 dilution. Predicted band size: 36 kDa. Observed band size: 36 kDa.



Immunohistochemistry of paraffin-embedded human skin tissue using PACO54790 at dilution of 1:100.



Immunohistochemistry of paraffin-embedded human pancreatic tissue using PACO54790 at dilution of 1:100.