

PACO54854

Product Information

Size:

50ug

Reactivity:

Human, Rat

Source:

Rabbit

Isotype:

IgG

Applications:

ELISA, WB, IHC

Recommended dilutions:

ELISA:1:2000-1:10000, WB:1:500-1:5000,
IHC:1:20-1:200

Protein Background:

May be either a bona fide (dihydro)ceramide synthase or a modulator of its activity. When overexpressed in cells is involved in the production of sphingolipids containing mainly one fatty acid, donor (N-linked stearoyl- (C18) ceramide) in a fumonisin B1-independent manner.

Gene ID:

CERS1

Uniprot

P27544

Synonyms:

Ceramide synthase 1 (CerS1) (LAG1 longevity assurance homolog 1) (Longevity assurance gene 1 protein homolog 1) (Protein UOG-1), CERS1, LAG1 LASS1 UOG1

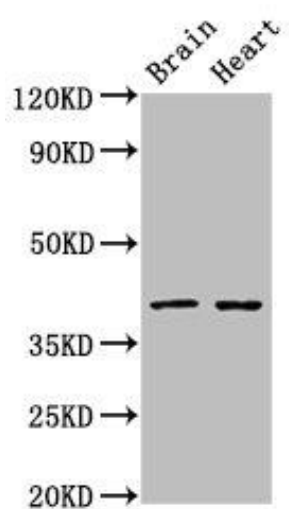
Immunogen:

Recombinant Human Ceramide synthase 1 protein (1-52AA).

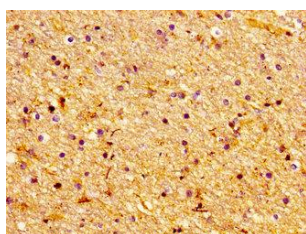
Storage:

Preservative: 0.03% Proclin 300. Constituents: 50% Glycerol, 0.01M PBS, pH 7.4

Product Images



Western Blot. Positive WB detected in: Rat brain tissue, Rat heart tissue. All lanes: CERS1 antibody at 3 μ g/ml. Secondary. Goat polyclonal to rabbit IgG at 1/50000 dilution. Predicted band size: 40, 38 kDa. Observed band size: 40 kDa.



Immunohistochemistry of paraffin-embedded human brain tissue using PACO54854 at dilution of 1:100.