

PACO54878

Product Information

Size:

50ug

Reactivity:

Human

Source:

Rabbit

Isotype:

IgG

Applications:

ELISA, IHC, IF

Recommended dilutions:

ELISA:1:2000-1:10000, IHC:1:20-1:200,
IF:1:50-1:200

Protein Background:

Isoform GANP: Essential for the generation of high-affinity B-cells against T-cell-dependent antigens by affecting somatic hypermutation at the IgV-regions. May have stimulation-dependent DNA primase activity that would generate extra RNA primers in very rapidly proliferating cells and would support clonal expansion of differentiating B-cells. Involved in the nuclear export of poly(A)-containing mRNAs by acting as a scaffold for the TREX-2 complex. The TREX-2 complex functions in docking export-competent ribonucleoprotein particles (mRNPs) to the nuclear entrance of the nuclear pore complex (nuclear basket). TREX-2 participates in mRNA export and accurate chromatin positioning in the nucleus by tethering genes to the nuclear periphery.

Gene ID:

MCM3AP

Uniprot

O60318

Synonyms:

Germinal-center associated nuclear protein (GANP) (80 kDa MCM3-associated protein) (MCM3 acetylating protein) (MCM3AP) (EC 2.3.1) (MCM3 acetyltransferase), MCM3AP, GANP KIAA0572 MAP80

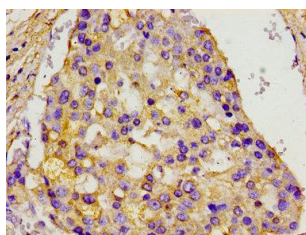
Immunogen:

Recombinant Human Germinal-center associated nuclear protein (292-435AA).

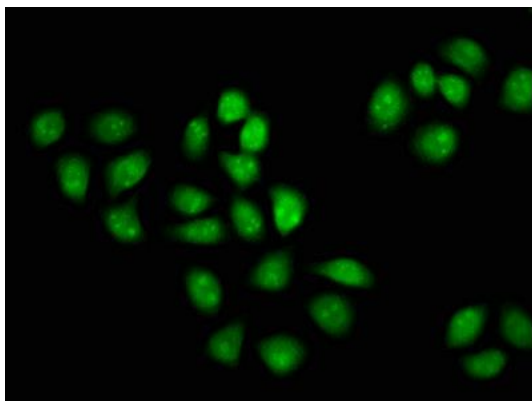
Storage:

Preservative: 0.03% Proclin 300. Constituents: 50% Glycerol, 0.01M PBS, pH 7.4

Product Images



Immunohistochemistry of paraffin-embedded human breast cancer using PACO54878 at dilution of 1:100.



Immunofluorescence staining of HeLa cells with PACO54878 at 1:133, counter-stained with DAPI. The cells were fixed in 4% formaldehyde, permeabilized using 0.2% Triton X-100 and blocked in 10% normal Goat Serum. The cells were then incubated with the antibody overnight at 4°C. The secondary antibody was Alexa Fluor 488-conjugated AffiniPure Goat Anti-Rabbit IgG(H+L).