

PACO54998

Product Information

Size:

50ug

Reactivity:

Human

Source:

Rabbit

Isotype:

IgG

Applications:

ELISA, WB, IHC, IF

Recommended dilutions:

ELISA:1:2000-1:10000, WB:1:500-1:5000,
IHC:1:20-1:200, IF:1:50-1:200

Protein Background:

Important in metal transport, in particular iron. Can also transport manganese, cobalt, cadmium, nickel, vanadium and lead. Involved in apical iron uptake into duodenal enterocytes. Involved in iron transport from acid, fied endosomes into the cytoplasm of erythroid precursor cells. May play an important role in hepatic iron accumulation and tissue iron distribution. May serve to import iron into the mitochondria.

Gene ID:

SLC11A2

Uniprot

P49281

Synonyms:

Natural resistance-associated macrophage protein 2 (NRAMP 2) (Divalent cation transporter 1) (Divalent metal transporter 1) (DMT-1) (Solute carrier family 11 member 2), SLC11A2, DCT1 DMT1 NRAMP2

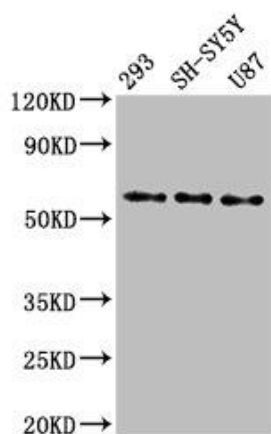
Immunogen:

Recombinant Human Natural resistance-associated macrophage protein 2 protein (1-69AA).

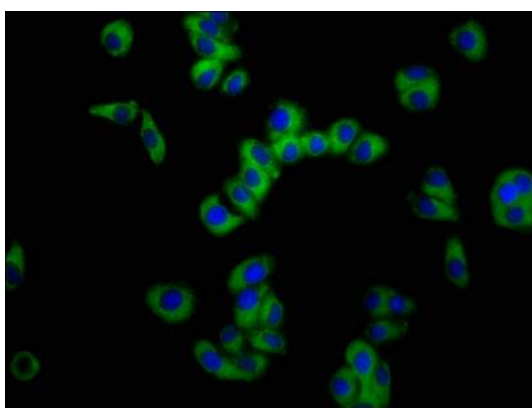
Storage:

Preservative: 0.03% Proclin 300. Constituents: 50% Glycerol, 0.01M PBS, pH 7.4

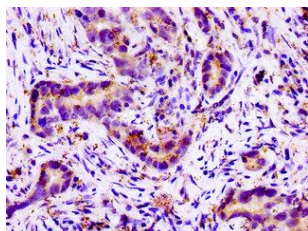
Product Images



Western Blot. Positive WB detected in: 293 whole cell lysate, SH-SY5Y whole cell lysate, U87 whole cell lysate. All lanes: SLC11A2 antibody at 3µg/ml. Secondary. Goat polyclonal to rabbit IgG at 1/50000 dilution. Predicted band size: 63, 62, 65, 66 kDa. Observed band size: 63 kDa.



Immunofluorescence staining of HepG2 cells with PACO54998 at 1:100, counter-stained with DAPI. The cells were fixed in 4% formaldehyde, permeabilized using 0.2% Triton X-100 and blocked in 10% normal Goat Serum. The cells were then incubated with the antibody overnight at 4°C. The secondary antibody was Alexa Fluor 488-conjugated AffiniPure Goat Anti-Rabbit IgG(H+L).



Immunohistochemistry of paraffin-embedded human pancreatic cancer using PACO54998 at dilution of 1:100.