

SLC25A12 Antibody



PACO55010

Product Information

Size:

50ug

Reactivity:

Human, Rat, Mouse

Source:

Rabbit

Isotype:

IgG

Applications:

ELISA, WB, IHC

Recommended dilutions:

ELISA:1:2000-1:10000, WB:1:500-1:5000,
IHC:1:20-1:200

Protein Background:

Catalyzes the calcium-dependent exchange of cytoplasmic glutamate with mitochondrial aspartate across the mitochondrial inner membrane. May have a function in the urea cycle.

Gene ID:

SLC25A12

Uniprot

O75746

Synonyms:

Calcium-binding mitochondrial carrier protein Aralar1 (Mitochondrial aspartate glutamate carrier 1) (Solute carrier family 25 member 12), SLC25A12, ARALAR1

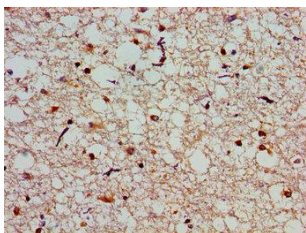
Immunogen:

Recombinant Human Calcium-binding mitochondrial carrier protein Aralar1 protein (202-317AA).

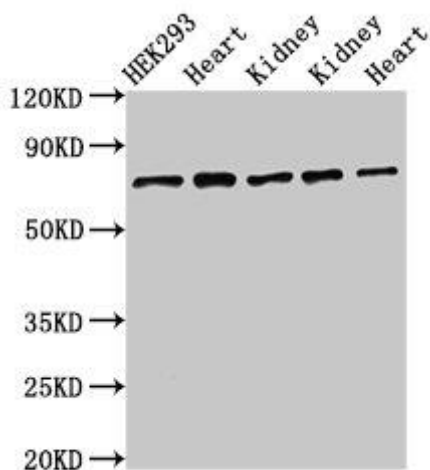
Storage:

Preservative: 0.03% Proclin 300. Constituents: 50% Glycerol, 0.01M PBS, pH 7.4

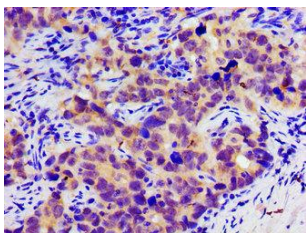
Product Images



Immunohistochemistry of paraffin-embedded human brain tissue using PACO55010 at dilution of 1:100.



Western Blot. Positive WB detected in: HEK293 whole cell lysate, Rat heart tissue, Rat kidney tissue, Mouse kidney tissue, Mouse heart tissue. All lanes: SLC25A12 antibody at 3 μ g/ml. Secondary. Goat polyclonal to rabbit IgG at 1/50000 dilution. Predicted band size: 75, 63 kDa. Observed band size: 75 kDa.



Immunohistochemistry of paraffin-embedded human pancreatic cancer using PACO55010 at dilution of 1:100.