

# NPTX1 Antibody



PACO55102

---

## Product Information

**Size:**

50ug

**Reactivity:**

Human

**Source:**

Rabbit

**Isotype:**

IgG

**Applications:**

ELISA, IHC, IF

**Recommended dilutions:**

ELISA:1:2000-1:10000, IHC:1:20-1:200,  
IF:1:50-1:200

**Protein Background:**

May be involved in mediating uptake of synaptic material during synapse remodeling or in mediating the synaptic clustering of AMPA glutamate receptors at a subset of excitatory synapses.

**Gene ID:**

NPTX1

**Uniprot**

Q15818

**Synonyms:**

Neuronal pentraxin-1 (NP1) (Neuronal pentraxin I) (NP-I), NPTX1

**Immunogen:**

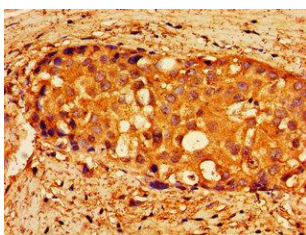
Recombinant Human Neuronal pentraxin-1 protein (88-227AA).

**Storage:**

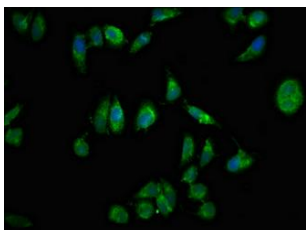
Preservative: 0.03% Proclin 300. Constituents: 50% Glycerol, 0.01M PBS, pH 7.4

## Product Images

---



Immunohistochemistry of paraffin-embedded human breast cancer using PACO55102 at dilution of 1:100.



Immunofluorescent analysis of HeLa cells using PACO55102 at dilution of 1:100 and Alexa Fluor 488-conjugated AffiniPure Goat Anti-Rabbit IgG(H+L).