

## Product Information

**Size:**

50ug

**Reactivity:**

Human

**Source:**

Rabbit

**Isotype:**

IgG

**Applications:**

ELISA, IHC

**Recommended dilutions:**

ELISA:1:2000-1:10000, IHC:1:20-1:200

**Protein Background:**

Chemotactic factor that attracts T-cells and monocytes, but not neutrophils, eosinophils, or B-cells. Acts mainly via CC chemokine receptor CCR1. Also binds to CCR3. CCL15(22-92), CCL15(25-92) and CCL15(29-92) are more potent chemoattractants than the small-inducible cytokine A15.

**Gene ID:**

CCL15

**Uniprot**

Q16663

**Synonyms:**

C-C motif chemokine 15 (Chemokine CC-2) (HCC-2) (Leukotactin-1) (LKN-1) (MIP-1 delta) (Macrophage inflammatory protein 5) (MIP-5) (Mrp-2b) (NCC-3) (Small-inducible cytokine A15) [Cleaved into: CCL15(22-92); CCL15(25-92); CCL15(29-92)], CCL15, MIP5 NCC3 SCYA15

**Immunogen:**

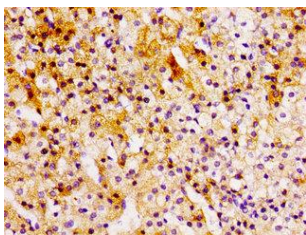
Recombinant Human C-C motif chemokine 15 protein (22-113AA).

**Storage:**

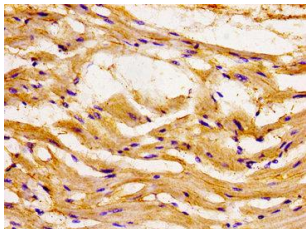
Preservative: 0.03% Proclin 300. Constituents: 50% Glycerol, 0.01M PBS, pH 7.4

## Product Images

---



Immunohistochemistry of paraffin-embedded human adrenal gland tissue using PACO55106 at dilution of 1:100.



Immunohistochemistry of paraffin-embedded human heart tissue using PACO55106 at dilution of 1:100.