

# RIPK1 Antibody



PACO55122

---

## Product Information

**Size:**

50ug

**Reactivity:**

Human, Rat, Mouse

**Source:**

Rabbit

**Isotype:**

IgG

**Applications:**

ELISA, WB, IF

**Recommended dilutions:**

ELISA:1:2000-1:10000, WB:1:500-1:5000,  
IF:1:200-1:500

**Protein Background:****Gene ID:**

RIPK1

**Uniprot**

Q13546

**Synonyms:**

Receptor-interacting serine/threonine-protein kinase 1 (EC 2.7.11.1) (Cell death protein RIP) (Receptor-interacting protein 1) (RIP-1) (Serine/threonine-protein kinase RIP), RIPK1, RIP RIP1

**Immunogen:**

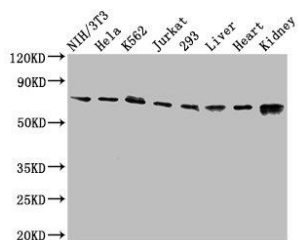
Recombinant Human Receptor-interacting serine/threonine-protein kinase 1 protein (328-458AA).

**Storage:**

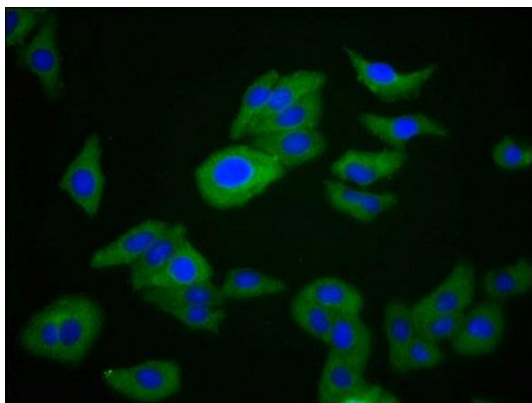
Preservative: 0.03% Proclin 300. Constituents: 50% Glycerol, 0.01M PBS, pH 7.4

## Product Images

---



Western Blot. Positive WB detected in: NIH/3T3 whole cell lysate, HeLa whole cell lysate, K562 whole cell lysate, Jurkat whole cell lysate, 293 whole cell lysate, Rat liver tissue, Mouse heart tissue, Mouse kidney tissue. All lanes: RIPK1 antibody at 3.2 $\mu$ g/ml. Secondary. Goat polyclonal to rabbit IgG at 1/50000 dilution. Predicted band size: 76, 71 kDa. Observed band size: 76 kDa.



Immunofluorescence staining of HepG2 cells with PACO55122 at 1:266, counter-stained with DAPI. The cells were fixed in 4% formaldehyde, permeabilized using 0.2% Triton X-100 and blocked in 10% normal Goat Serum. The cells were then incubated with the antibody overnight at 4°C. The secondary antibody was Alexa Fluor 488-conjugated AffiniPure Goat Anti-Rabbit IgG(H+L).