

PACO55182

---

## Product Information

**Size:**

50ug

**Reactivity:**

Human

**Source:**

Rabbit

**Isotype:**

IgG

**Applications:**

ELISA, WB, IHC

**Recommended dilutions:**

ELISA:1:2000-1:10000, WB:1:500-1:5000,  
IHC:1:20-1:200

**Protein Background:**

May be involved in sphingolipid synthesis or its regulation.

**Gene ID:**

CERS6

**Uniprot**

Q6ZMG9

**Synonyms:**

Ceramide synthase 6 (CerS6) (LAG1 longevity assurance homolog 6), CERS6, LASS6

**Immunogen:**

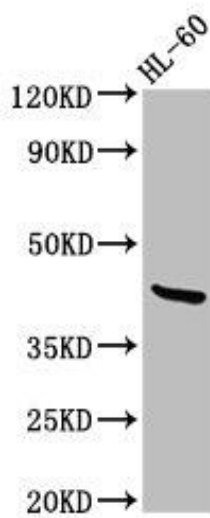
Recombinant Human Ceramide synthase 6 protein (324-392AA).

**Storage:**

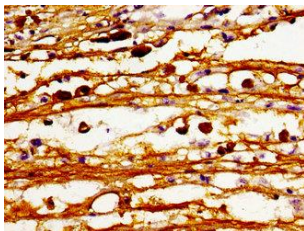
Preservative: 0.03% Proclin 300. Constituents: 50% Glycerol, 0.01M PBS, pH 7.4

## Product Images

---



Western Blot. Positive WB detected in: HL60 whole cell lysate. All lanes: CERS6 antibody at 2.7 $\mu$ g/ml. Secondary. Goat polyclonal to rabbit IgG at 1/50000 dilution. Predicted band size: 45, 46 kDa. Observed band size: 45 kDa.



Immunohistochemistry of paraffin-embedded human melanoma using PACO55182 at dilution of 1:100.