

MARK2 Antibody



PACO55190

Product Information

Size:

50ug

Reactivity:

Human

Source:

Rabbit

Isotype:

IgG

Applications:

ELISA, WB, IHC

Recommended dilutions:

ELISA:1:2000-1:10000, WB:1:2000-1:10000,
IHC:1:20-1:200

Protein Background:

Gene ID:

MARK2

Uniprot

Q7KZI7

Synonyms:

Serine/threonine-protein kinase MARK2 (EC 2.7.11.1) (EC 2.7.11.26) (ELKL motif kinase 1) (EMK-1) (MAP/microtubule affinity-regulating kinase 2) (PAR1 homolog) (PAR1 homolog b) (Par-1b) (Par1b), MARK2, EMK1

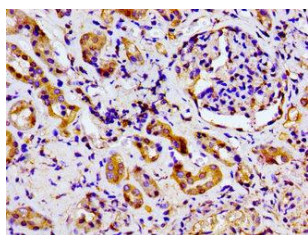
Immunogen:

Recombinant Human Serine/threonine-protein kinase MARK2 protein (373-594AA).

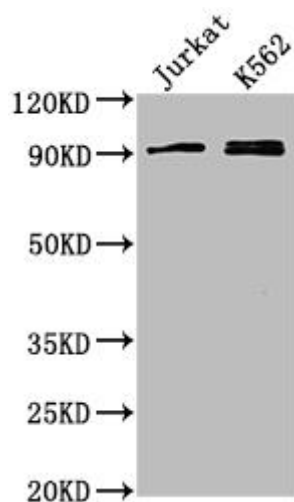
Storage:

Preservative: 0.03% Proclin 300. Constituents: 50% Glycerol, 0.01M PBS, pH 7.4

Product Images



Immunohistochemistry of paraffin-embedded human kidney tissue using PACO55190 at dilution of 1:100.



Western Blot. Positive WB detected in: Jurkat whole cell lysate, K562 whole cell lysate. All lanes: MARK2 antibody at 1:2000. Secondary. Goat polyclonal to rabbit IgG at 1/50000 dilution. Predicted band size: 88, 79, 84, 82, 81, 78, 87, 83, 80 kDa. Observed band size: 88 kDa.