

Product Information

Size:

50ug

Reactivity:

Human

Source:

Rabbit

Isotype:

IgG

Applications:

ELISA, IHC, IF

Recommended dilutions:

ELISA:1:2000-1:10000, IHC:1:20-1:200,
IF:1:50-1:200

Protein Background:

Seems to act as scaffold molecule at synaptic junctions by assembling neurotransmitter receptors and cell adhesion proteins. May play a role in regulating activin-mediated signaling in neuronal cells. Enhances the ability of PTEN to suppress AKT1 activation. Plays a role in nerve growth factor (NGF)-induced recruitment of RAPGEF2 to late endosomes and neurite outgrowth.

Gene ID:

MAGI2

Uniprot

Q86UL8

Synonyms:

Membrane-associated guanylate kinase, WW and PDZ domain-containing protein 2 (Atrophin-1-interacting protein 1) (AIP-1) (Atrophin-1-interacting protein A) (Membrane-associated guanylate kinase inverted 2) (MAGI-2), MAGI2, ACVRINP1 AIP1 KIAA0705

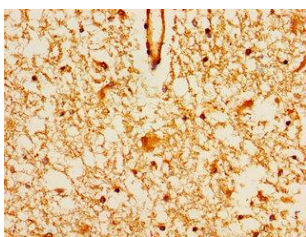
Immunogen:

Recombinant Human Membrane-associated guanylate kinase, WW and PDZ domain-containing protein 2 protein (1308-1455AA).

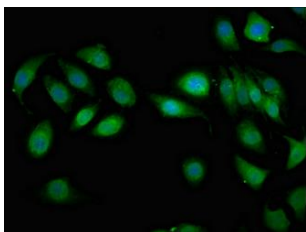
Storage:

Preservative: 0.03% Proclin 300. Constituents: 50% Glycerol, 0.01M PBS, pH 7.4

Product Images



Immunohistochemistry of paraffin-embedded human brain tissue using PACO55198 at dilution of 1:100.



Immunofluorescent analysis of A549 cells using PACO55198 at dilution of 1:100 and Alexa Fluor 488-conjugated AffiniPure Goat Anti-Rabbit IgG(H+L).