

PACO55226

Product Information

Size:

50ug

Reactivity:

Human

Source:

Rabbit

Isotype:

IgG

Applications:

ELISA, IHC

Recommended dilutions:

ELISA:1:2000-1:10000, IHC:1:20-1:200

Protein Background:

Receptor for ghrelin, coupled to G-alpha-11 proteins. Stimulates growth hormone secretion. Binds also other growth hormone releasing peptides (GHRP) (e. g. Met-enkephalin and GHRP-6) as well as non-peptide, low molecular weight secretagogues (e. g. L-692,429, MK-0677, adenosine).

Gene ID:

GHSR

Uniprot

Q92847

Synonyms:

Growth hormone secretagogue receptor type 1 (GHS-R) (GH-releasing peptide receptor) (GHRP) (Ghrelin receptor), GHSR

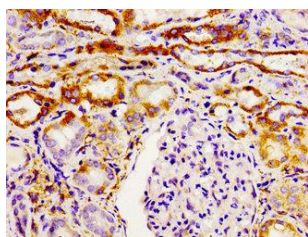
Immunogen:

Recombinant Human Growth hormone secretagogue receptor type 1 protein (1-40AA).

Storage:

Preservative: 0.03% Proclin 300. Constituents: 50% Glycerol, 0.01M PBS, pH 7.4

Product Images



Immunohistochemistry of paraffin-embedded human kidney tissue using PACO55226 at dilution of 1:100.