

PHLDA1 Antibody



PACO55230

Product Information

Size:

50ug

Reactivity:

Human

Source:

Rabbit

Isotype:

IgG

Applications:

ELISA, IHC, IF

Recommended dilutions:

ELISA:1:2000-1:10000, IHC:1:20-1:200,
IF:1:50-1:200

Protein Background:

Seems to be involved in regulation of apoptosis. May be involved in detachment-mediated programmed cell death. May mediate apoptosis during neuronal development. May be involved in regulation of anti-apoptotic effects of IGF1. May be involved in translational regulation.

Gene ID:

PHLDA1

Uniprot

Q8WV24

Synonyms:

Pleckstrin homology-like domain family A member 1 (Apoptosis-associated nuclear protein) (Proline- and glutamine-rich protein) (PQ-rich protein) (PQR protein) (Proline- and histidine-rich protein) (T-cell death-associated gene 51 protein), PHLDA1, PHRIP TDAG51

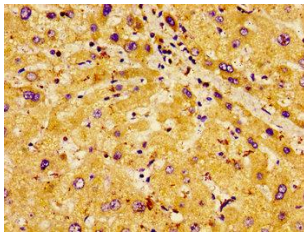
Immunogen:

Recombinant Human Pleckstrin homology-like domain family A member 1 protein (1-138AA).

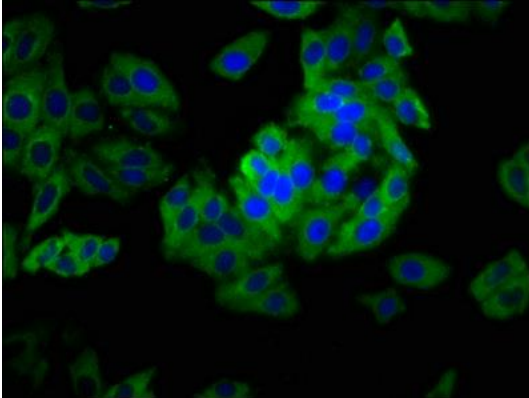
Storage:

Preservative: 0.03% Proclin 300. Constituents: 50% Glycerol, 0.01M PBS, pH 7.4

Product Images



Immunohistochemistry of paraffin-embedded human liver tissue using PACO55230 at dilution of 1: 100.



Immunofluorescence staining of HepG2 cells with PACO55230 at 1: 133, counter-stained with DAPI. The cells were fixed in 4% formaldehyde, permeabilized tissue using 0.2% Triton X-100 and blocked in 10% normal Goat Serum. The cells were then incubated with the antibody overnight at 4°C. The secondary antibody was Alexa Fluor 488-conjugated AffiniPure Goat Anti-Rabbit IgG(H+L).