

ARHGEF12 Antibody



PACO55278

Product Information

Size:

50ug

Reactivity:

Human

Source:

Rabbit

Isotype:

IgG

Applications:

ELISA, IHC, IF

Recommended dilutions:

ELISA:1:2000-1:10000, IHC:1:20-1:200,
IF:1:50-1:200

Protein Background:

May play a role in the regulation of RhoA GTPase by guanine nucleotide-binding alpha-12 (GNA12) and alpha-13 (GNA13). Acts as guanine nucleotide exchange factor (GEF) for RhoA GTPase and may act as GTPase-activating protein (GAP) for GNA12 and GNA13.

Gene ID:

ARHGEF12

Uniprot

Q9NZN5

Synonyms:

Rho guanine nucleotide exchange factor 12 (Leukemia-associated RhoGEF), ARHGEF12, KIAA0382 LARG

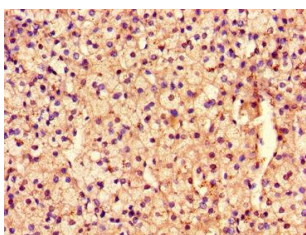
Immunogen:

Recombinant Human Rho guanine nucleotide exchange factor 12 protein (1302-1501AA).

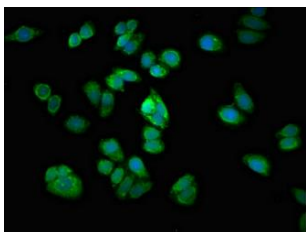
Storage:

Preservative: 0.03% Proclin 300. Constituents: 50% Glycerol, 0.01M PBS, pH 7.4

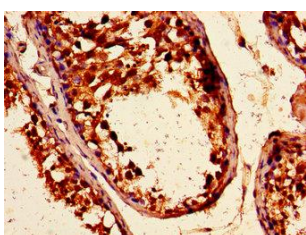
Product Images



Immunohistochemistry of paraffin-embedded human adrenal gland tissue using PACO55278 at dilution of 1:100.



Immunofluorescent analysis of HepG2 cells using PACO55278 at dilution of 1:100 and Alexa Fluor 488-conjugated AffiniPure Goat Anti-Rabbit IgG(H+L).



Immunohistochemistry of paraffin-embedded human testis tissue using PACO55278 at dilution of 1:100.