

TUBGCP4 Antibody



PACO55282

Product Information

Size:

50ug

Reactivity:

Human

Source:

Rabbit

Isotype:

IgG

Applications:

ELISA, WB, IHC, IF, IP

Recommended dilutions:

ELISA:1:2000-1:10000, WB:1:500-1:5000,
IHC:1:20-1:200, IF:1:200-1:500, IP:1:200-
1:2000,

Protein Background:

Gamma-tubulin complex is necessary for microtubule nucleation at the centrosome.

Gene ID:

TUBGCP4

Uniprot

Q9UGJ1

Synonyms:

Gamma-tubulin complex component 4 (GCP-4) (hGCP4) (Gamma-ring complex protein 76 kDa) (h76p) (hGrip76), TUBGCP4, 76P GCP4

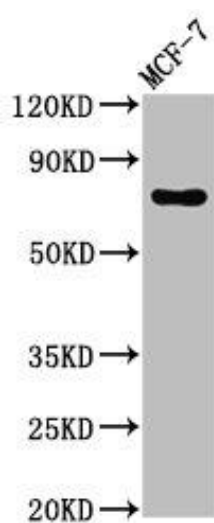
Immunogen:

Recombinant Human Gamma-tubulin complex component 4 protein (203-309AA).

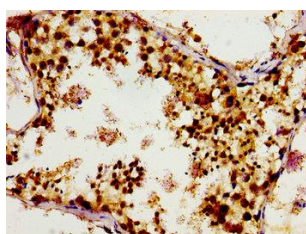
Storage:

Preservative: 0.03% Proclin 300. Constituents: 50% Glycerol, 0.01M PBS, pH 7.4

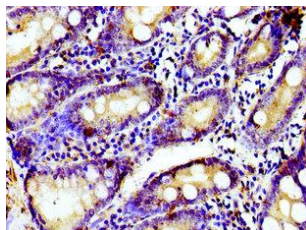
Product Images



Western Blot. Positive WB detected in: MCF-7 whole cell lysate. All lanes: TUBGCP4 antibody at 3 μ g/ml. Secondary. Goat polyclonal to rabbit IgG at 1/50000 dilution. Predicted band size: 77 kDa. Observed band size: 77 kDa.



Immunohistochemistry of paraffin-embedded human testis tissue using PACO55282 at dilution of 1:100.



Immunohistochemistry of paraffin-embedded human small intestine tissue using PACO55282 at dilution of 1:100.