

PACO55330

Product Information

Size:

50ug

Reactivity:

Human

Source:

Rabbit

Isotype:

IgG

Applications:

ELISA, IHC

Recommended dilutions:

ELISA:1:2000-1:10000, IHC:1:20-1:200

Protein Background:

May be a transcription regulator involved in cell-cycle progression and skeletal muscle differentiation. May repress GTF2I transcriptional functions, by preventing its nuclear residency, or by inhibiting its transcriptional activation. May contribute to slow-twitch fiber type specificity during myogenesis and in regenerating muscles. Binds troponin I slow-muscle fiber enhancer (USE B1). Binds specifically and with high affinity to the EFG sequences derived from the early enhancer of HOXC8.

Gene ID:

GTF2IRD1

Uniprot

Q9UHL9

Synonyms:

General transcription factor II-I repeat domain-containing protein 1 (GTF2I repeat domain-containing protein 1) (General transcription factor III) (MusTRD1/BEN) (Muscle TFII-I repeat domain-containing protein 1) (Slow-muscle-fiber enhancer-binding protein) (USE B1-binding protein) (Williams-Beuren syndrome chromosomal region 11 protein) (Williams-Beuren syndrome chromosomal region 12 protein), GTF2IRD1, CREAM1 GTF3 MUSTRD1 RBAP2 WBSCR11 WBSCR12

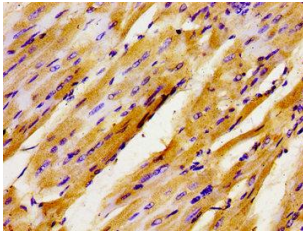
Immunogen:

Recombinant Human General transcription factor II-I repeat domain-containing protein 1 protein (436-560AA).

Storage:

Preservative: 0.03% Proclin 300. Constituents: 50% Glycerol, 0.01M PBS, pH 7.4

Product Images



Immunohistochemistry of paraffin-embedded human heart tissue using PACO55330 at dilution of 1:100.