

# LAMP3 Antibody



PACO55358

---

## Product Information

**Size:**

50ug

**Reactivity:**

Human

**Source:**

Rabbit

**Isotype:**

IgG

**Applications:**

ELISA, WB, IHC

**Recommended dilutions:**

ELISA:1:2000-1:10000, WB:1:500-1:5000,  
IHC:1:20-1:200

**Protein Background:**

May play a role in dendritic cell function and in adaptive immunity.

**Gene ID:**

LAMP3

**Uniprot**

Q9UQV4

**Synonyms:**

Lysosome-associated membrane glycoprotein 3 (LAMP-3) (Lysosomal-associated membrane protein 3) (DC-lysosome-associated membrane glycoprotein) (DC LAMP) (Protein TSC403) (CD antigen CD208), LAMP3, DCLAMP TSC403

**Immunogen:**

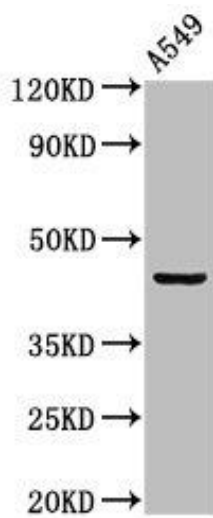
Recombinant Human Lysosome-associated membrane glycoprotein 3 protein (28-224AA).

**Storage:**

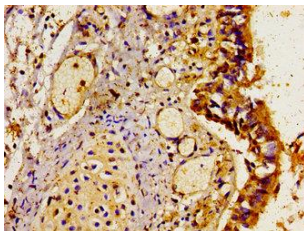
Preservative: 0.03% Proclin 300. Constituents: 50% Glycerol, 0.01M PBS, pH 7.4

## Product Images

---



Western Blot. Positive WB detected in: A549 whole cell lysate. All lanes: LAMP3 antibody at 2 $\mu$ g/ml. Secondary. Goat polyclonal to rabbit IgG at 1/50000 dilution. Predicted band size: 45 kDa. Observed band size: 45 kDa.



Immunohistochemistry of paraffin-embedded human lung tissue using PACO55358 at dilution of 1:100.