

# ABCC5 Antibody



PACO55378

---

## Product Information

**Size:**

50ug

**Reactivity:**

Human

**Source:**

Rabbit

**Isotype:**

IgG

**Applications:**

ELISA, IHC, IF

**Recommended dilutions:**

ELISA:1:2000-1:10000, IHC:1:200-1:500,  
IF:1:50-1:200

**Protein Background:**

Acts as a multispecific organic anion pump which can transport nucleotide analogs.

**Gene ID:**

ABCC5

**Uniprot**

O15440

**Synonyms:**

Multidrug resistance-associated protein 5 (ATP-binding cassette sub-family C member 5) (Multi-specific organic anion transporter C) (MOAT-C) (SMRP) (pABC11), ABCC5, MRP5

**Immunogen:**

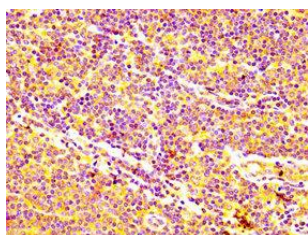
Recombinant Human Multidrug resistance-associated protein 5 protein (455-566AA).

**Storage:**

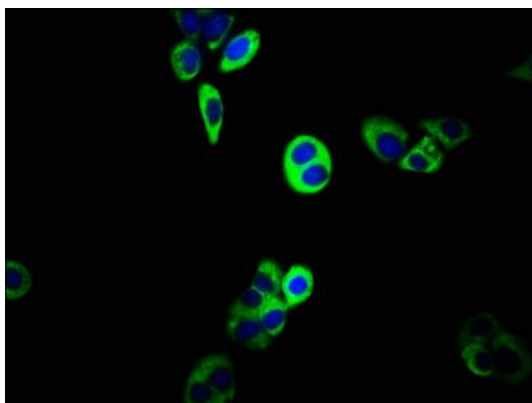
Preservative: 0.03% Proclin 300. Constituents: 50% Glycerol, 0.01M PBS, pH 7.4

## Product Images

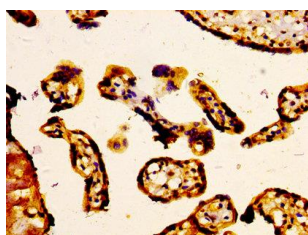
---



IHC image of PACO55378 diluted at 1:400 and staining in paraffin-embedded human lymph node tissue performed on a Leica Bond™ system. After dewaxing and hydration, antigen retrieval was mediated by high pressure in a citrate buffer (pH 6.0). Section was blocked with 10% normal goat serum 30min at RT. Then primary antibody (1% BSA) was incubated at 4°C overnight. The primary is detected by a biotinylated secondary antibody and visualized using an HRP conjugated SP system.



Immunofluorescence staining of PC-3 cells with PACO55378 at 1:133, counter-stained with DAPI. The cells were fixed in 4% formaldehyde, permeabilized using 0.2% Triton X-100 and blocked in 10% normal Goat Serum. The cells were then incubated with the antibody overnight at 4°C. The secondary antibody was Alexa Fluor 488-conjugated AffiniPure Goat Anti-Rabbit IgG(H+L).



IHC image of PACO55378 diluted at 1:400 and staining in paraffin-embedded human placenta tissue performed on a Leica Bond™ system. After dewaxing and hydration, antigen retrieval was mediated by high pressure in a citrate buffer (pH 6.0). Section was blocked with 10% normal goat serum 30min at RT. Then primary antibody (1% BSA) was incubated at 4°C overnight. The primary is detected by a biotinylated secondary antibody and visualized using an HRP conjugated SP system.