
Product Information

Size:

50ug

Reactivity:

Human, Rat, Mouse

Source:

Rabbit

Isotype:

IgG

Applications:

ELISA, WB, IHC, IF

Recommended dilutions:

ELISA:1:2000-1:10000, WB:1:500-1:5000,
IHC:1:100-1:300, IF:1:50-1:200

Protein Background:

Has a key role in phospholipid biosynthesis. Catalyzes the first step in phosphatidylethanolamine biosynthesis. Phosphorylates ethanolamine, and can also act on choline (in vitro). Has higher activity with ethanolamine. May not significantly contribute to in vivo phosphatidylcholine biosynthesis.

Gene ID:

CHKB

Uniprot

Q9Y259

Synonyms:

Choline/ethanolamine kinase (Choline kinase beta) (CK) (CKB) (EC 2.7.1.32) (Choline kinase-like protein) (Ethanolamine kinase) (EK) (EC 2.7.1.82) (Ethanolamine kinase beta) (EKB) (choline/ethanolamine kinase beta) (CKEKB), CHKB, CHETK CHKL

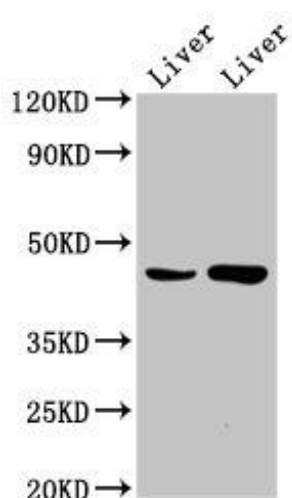
Immunogen:

Recombinant Human Choline/ethanolamine kinase protein (2-99AA).

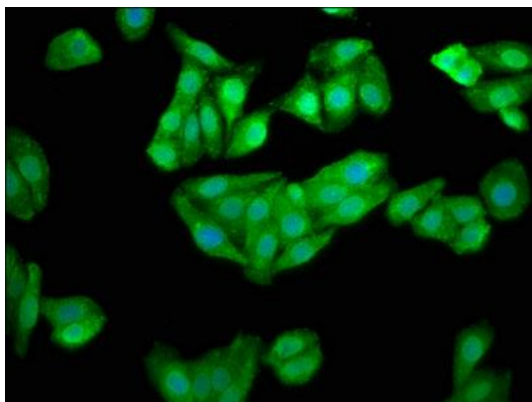
Storage:

Preservative: 0.03% Proclin 300. Constituents: 50% Glycerol, 0.01M PBS, pH 7.4

Product Images



Western Blot. Positive WB detected in: Rat liver tissue, Mouse liver tissue. All lanes: CHKB antibody at 6.6 μ g/ml. Secondary. Goat polyclonal to rabbit IgG at 1/50000 dilution. Predicted band size: 46, 14 kDa. Observed band size: 46 kDa.



Immunofluorescence staining of HepG2 cells with PACO55426 at 1:100, counter-stained with DAPI. The cells were fixed in 4% formaldehyde, permeabilized using 0.2% Triton X-100 and blocked in 10% normal Goat Serum. The cells were then incubated with the antibody overnight at 4°C. The secondary antibody was Alexa Fluor 488-conjugated AffiniPure Goat Anti-Rabbit IgG(H+L).



IHC image of PACO55426 diluted at 1:300 and staining in paraffin-embedded human thyroid tissue performed on a Leica BondTM system. After dewaxing and hydration, antigen retrieval was mediated by high pressure in a citrate buffer (pH 6.0). Section was blocked with 10% normal goat serum 30min at RT. Then primary antibody (1% BSA) was incubated at 4°C overnight. The primary is detected by a biotinylated secondary antibody and visualized using an HRP conjugated SP system.