

PACO55450

---

## Product Information

**Size:**

50ug

**Reactivity:**

Human, Mouse

**Source:**

Rabbit

**Isotype:**

IgG

**Applications:**

ELISA, WB, IHC, IF

**Recommended dilutions:**

ELISA:1:2000-1:10000, WB:1:500-1:5000,  
IHC:1:300-1:500, IF:1:50-1:200

**Protein Background:**

Responsible for the metabolism of a number of therapeutic agents such as the anticonvulsant drug S-mephenytoin, omeprazole, proguanil, certain barbiturates, diazepam, propranolol, citalopram and imipramine.

**Gene ID:**

CYP2C19

**Uniprot**

P33261

**Synonyms:**

Cytochrome P450 2C19 (EC 1.14.13) ((R)-limonene 6-monooxygenase) (EC 1.14.14.53) ((S)-limonene 6-monooxygenase) (EC 1.14.14.51) ((S)-limonene 7-monooxygenase) (EC 1.14.14.52) (CYPIIC17) (CYPIIC19) (Cytochrome P450-11A) (Cytochrome P450-254C) (Mephenytoin 4-hydroxylase), CYP2C19

**Immunogen:**

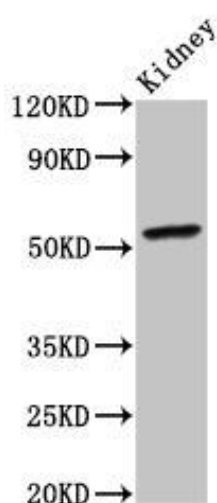
Recombinant Human Cytochrome P450 2C19 protein (245-353AA).

**Storage:**

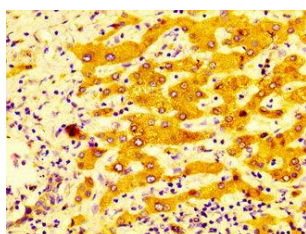
Preservative: 0.03% Proclin 300. Constituents: 50% Glycerol, 0.01M PBS, pH 7.4

## Product Images

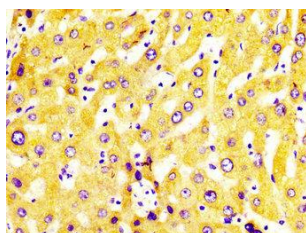
---



Western Blot. Positive WB detected in: Mouse kidney tissue. All lanes: CYP2C19 antibody at 4 $\mu$ g/ml. Secondary: Goat polyclonal to rabbit IgG at 1/50000 dilution. Predicted band size: 56 kDa. Observed band size: 56 kDa.



IHC image of PACO55450 diluted at 1:400 and staining in paraffin-embedded human liver cancer performed on a Leica Bond<sup>TM</sup> system. After dewaxing and hydration, antigen retrieval was mediated by high pressure in a citrate buffer (pH 6.0). Section was blocked with 10% normal goat serum 30min at RT. Then primary antibody (1% BSA) was incubated at 4°C overnight. The primary is detected by a biotinylated secondary antibody and visualized using an HRP conjugated SP system.



IHC image of PACO55450 diluted at 1:400 and staining in paraffin-embedded human liver tissue performed on a Leica Bond<sup>TM</sup> system. After dewaxing and hydration, antigen retrieval was mediated by high pressure in a citrate buffer (pH 6.0). Section was blocked with 10% normal goat serum 30min at RT. Then primary antibody (1% BSA) was incubated at 4°C overnight. The primary is detected by a biotinylated secondary antibody and visualized using an HRP conjugated SP system.