

## Product Information

**Size:**

50ug

**Reactivity:**

Human

**Source:**

Rabbit

**Isotype:**

IgG

**Applications:**

ELISA, WB, IHC

**Recommended dilutions:**

ELISA:1:2000-1:10000, WB:1:500-1:5000,  
IHC:1:20-1:200

**Protein Background:**

Serum protease that plays an important role in the activation of the complement system via mannose-binding lectin. After activation by auto-catalytic cleavage it cleaves C2 and C4, leading to their activation and to the formation of C3 convertase.

**Gene ID:**

MASP2

**Uniprot**

O00187

**Synonyms:**

Mannan-binding lectin serine protease 2 (EC 3.4.21.104) (MBL-associated serine protease 2) (Mannose-binding protein-associated serine protease 2) (MASP-2) [Cleaved into: Mannan-binding lectin serine protease 2 A chain; Mannan-binding lectin serine protease 2 B chain], MASP2

**Immunogen:**

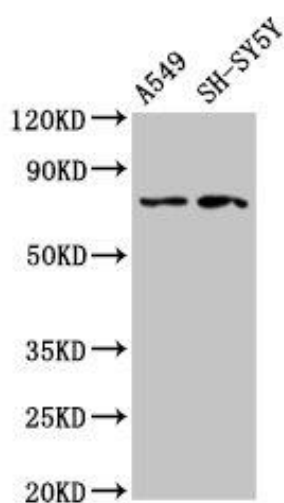
Recombinant Human Mannan-binding lectin serine protease 2 protein (189-314AA).

**Storage:**

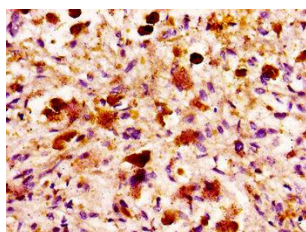
Preservative: 0.03% Proclin 300. Constituents: 50% Glycerol, 0.01M PBS, pH 7.4

## Product Images

---



Western Blot. Positive WB detected in: A549 whole cell lysate, SH-SY5Y whole cell lysate. All lanes: MASP2 antibody at 2.7 $\mu$ g/ml. Secondary: Goat polyclonal to rabbit IgG at 1/50000 dilution. Predicted band size: 76, 21 kDa. Observed band size: 76 kDa.



IHC image of PACO55618 diluted at 1:100 and staining in paraffin-embedded human melanoma performed on a Leica Bond<sup>TM</sup> system. After dewaxing and hydration, antigen retrieval was mediated by high pressure in a citrate buffer (pH 6.0). Section was blocked with 10% normal goat serum 30min at RT. Then primary antibody (1% BSA) was incubated at 4°C overnight. The primary is detected by a biotinylated secondary antibody and visualized using an HRP conjugated SP system.