

# MCHR2 Antibody



PACO55630

---

## Product Information

**Size:**

50ug

**Reactivity:**

Human

**Source:**

Rabbit

**Isotype:**

IgG

**Applications:**

ELISA, IHC, IF

**Recommended dilutions:**

ELISA:1:2000-1:10000, IHC:1:200-1:500,  
IF:1:50-1:200

**Protein Background:**

Receptor for melanin-concentrating hormone, coupled to G proteins that activate phosphoinositide hydrolysis.

**Gene ID:**

MCHR2

**Uniprot**

Q969V1

**Synonyms:**

Melanin-concentrating hormone receptor 2 (MCH receptor 2) (MCH-R2) (MCHR-2) (G-protein coupled receptor 145) (GPRv17) (MCH-2R) (MCH2) (MCH2R), MCHR2, GPR145 SLT

**Immunogen:**

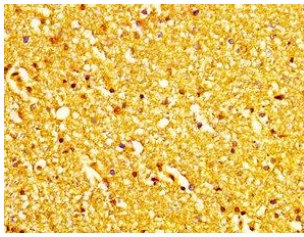
Recombinant Human Melanin-concentrating hormone receptor 2 protein (1-39AA).

**Storage:**

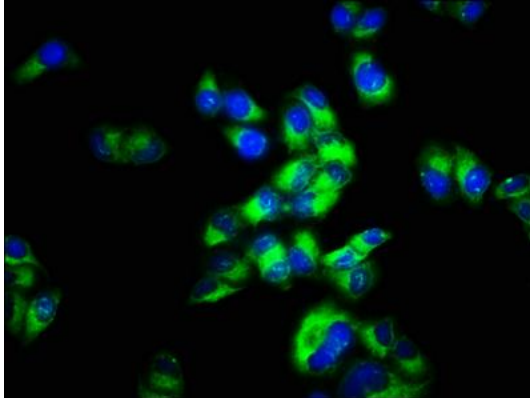
Preservative: 0.03% Proclin 300. Constituents: 50% Glycerol, 0.01M PBS, pH 7.4

## Product Images

---



IHC image of PACO55630 diluted at 1:200 and staining in paraffin-embedded human brain tissue performed on a Leica Bond<sup>TM</sup> system. After dewaxing and hydration, antigen retrieval was mediated by high pressure in a citrate buffer (pH 6.0). Section was blocked with 10% normal goat serum 30min at RT. Then primary antibody (1% BSA) was incubated at 4°C overnight. The primary is detected by a biotinylated secondary antibody and visualized using an HRP conjugated SP system.



Immunofluorescence staining of HeLa cells with PACO55630 at 1:66, counter-stained with DAPI. The cells were fixed in 4% formaldehyde, permeabilized using 0.2% Triton X-100 and blocked in 10% normal Goat Serum. The cells were then incubated with the antibody overnight at 4°C. The secondary antibody was Alexa Fluor 488-conjugated AffiniPure Goat Anti-Rabbit IgG(H+L).