

Product Information

Size:

50ug

Reactivity:

Human, Rat

Source:

Rabbit

Isotype:

IgG

Applications:

ELISA, WB, IHC, IF

Recommended dilutions:

ELISA:1:2000-1:10000, WB:1:500-1:5000,
IHC:1:100-1:300, IF:1:50-1:200

Protein Background:

Binds the sequence 5'-ATCAATCAA-3'. Acts as a transcriptional activator of PF4 in complex with MEIS1. Converted into a potent transcriptional activator by the (1;19) translocation. May have a role in steroidogenesis and, subsequently, sexual development and differentiation. Isoform PBX1b as part of a PDX1: PBX1b: MEIS2b complex in pancreatic acinar cells is involved in the transcriptional activation of the ELA1 enhancer; the complex binds to the enhancer B element and cooperates with the transcription factor 1 complex (PTF1) bound to the enhancer A element. Probably in complex with MEIS2, is involved in transcriptional regulation by KLF4. Acts as a transcriptional activator of NKX2-5 and a transcriptional repressor of CDKN2B. Together with NKX2-5, it is required for spleen development through a mechanism that involves CDKN2B repression.

Gene ID:

PBX1

Uniprot

P40424

Synonyms:

Pre-B-cell leukemia transcription factor 1 (Homeobox protein PBX1) (Homeobox protein PRL), PBX1, PRL

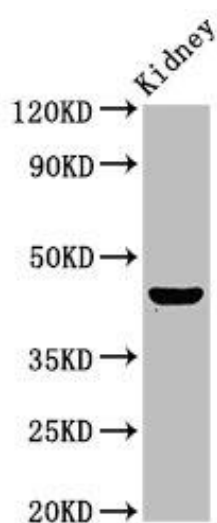
Immunogen:

Recombinant Human Pre-B-cell leukemia transcription factor 1 protein (315-430AA).

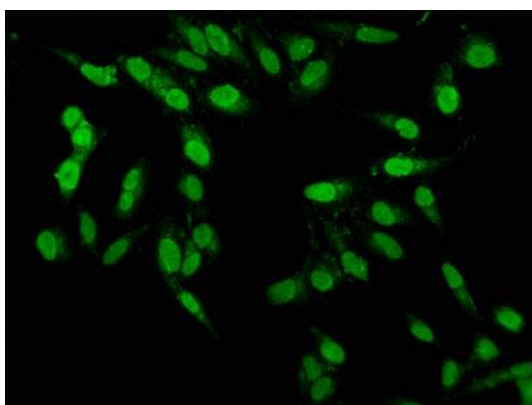
Storage:

Preservative: 0.03% Proclin 300. Constituents: 50% Glycerol, 0.01M PBS, pH 7.4

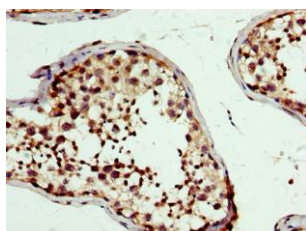
Product Images



Western Blot. Positive WB detected in: Rat kidney tissue. All lanes: PBX1 antibody at 4.7 μ g/ml. Secondary. Goat polyclonal to rabbit IgG at 1/50000 dilution. Predicted band size: 47, 39 kDa. Observed band size: 47 kDa.



Immunofluorescence staining of HeLa cells with PACO55710 at 1:100, counter-stained with DAPI. The cells were fixed in 4% formaldehyde, permeabilized using 0.2% Triton X-100 and blocked in 10% normal Goat Serum. The cells were then incubated with the antibody overnight at 4°C. The secondary antibody was Alexa Fluor 488-conjugated AffiniPure Goat Anti-Rabbit IgG(H+L).



IHC image of PACO55710 diluted at 1:300 and staining in paraffin-embedded human testis tissue performed on a Leica BondTM system. After dewaxing and hydration, antigen retrieval was mediated by high pressure in a citrate buffer (pH 6.0). Section was blocked with 10% normal goat serum 30min at RT. Then primary antibody (1% BSA) was incubated at 4°C overnight. The primary is detected by a biotinylated secondary antibody and visualized using an HRP conjugated SP system.